

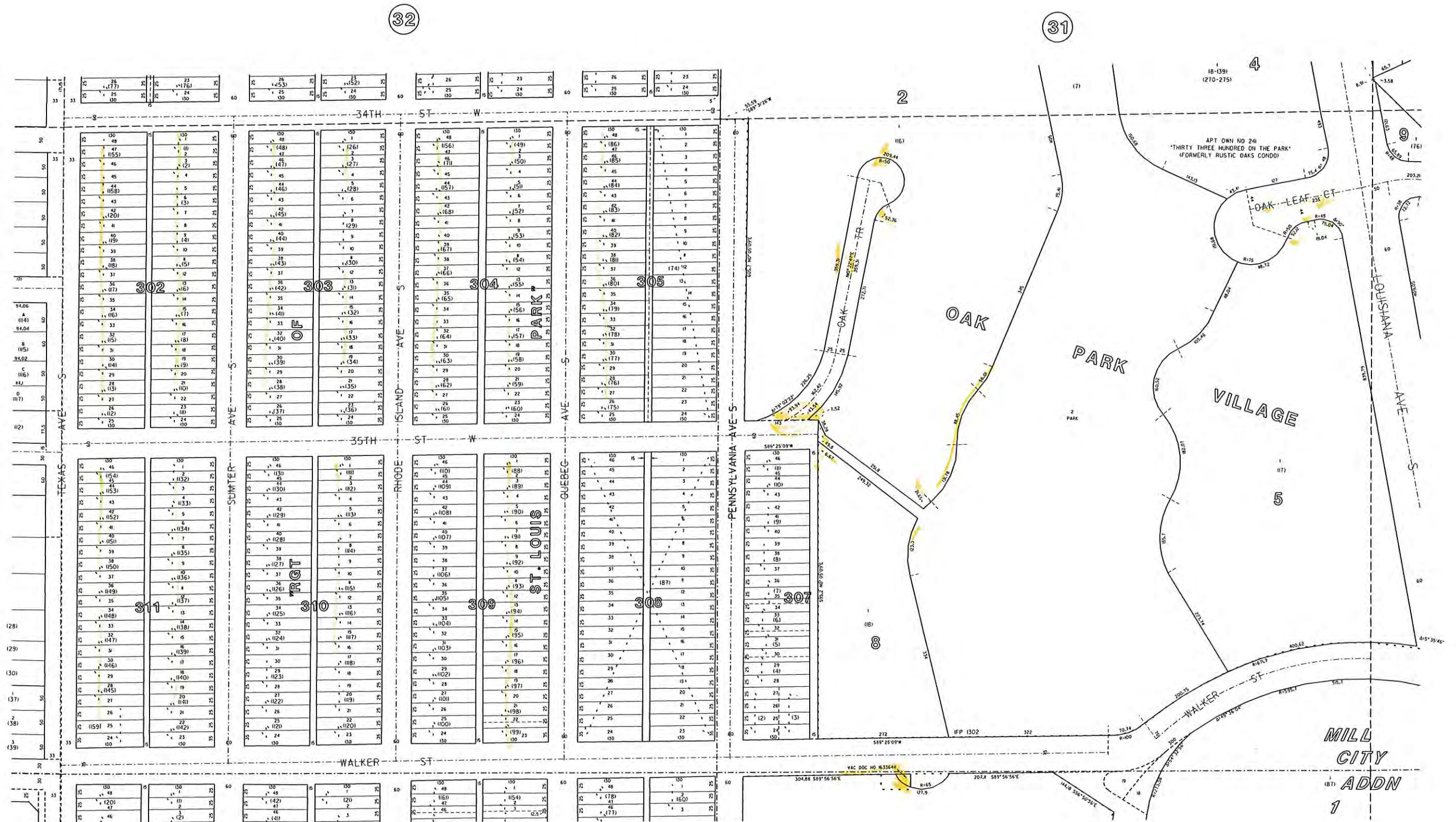
A horizontal scale bar with alternating black and white segments. It is marked with the numbers 200, 0, 200, and 400. The word "scale" is at the left end and "feet" is at the right end.



N1/2 SW1/4 SEC.17 T.117 R.21

ST. LOUIS PARK-46

SEC.18, T.117, R.21



THIS IS NOT A LEGALLY RECORDED MAP. IT REPRESENTS A COMPILATION OF INFORMATION AND DATA FROM CITY, COUNTY AND STATE ROAD AUTHORITIES AND OTHER SOURCES.



LEGEND

- STORM SEWER DISTRICT BOUNDARY
- SCHOOL DISTRICT BOUNDARY
- WATERSHED DISTRICT BOUNDARY
- INCREMENT BOUNDARY
- MUNICIPAL BOUNDARY

HENNEPIN COUNTY, MINNESOTA
TAXPAYER SERVICES DEPARTMENT
SURVEY DIVISION

42

41



THIS IS NOT A LEGALLY RECORDED MAP. IT REPRESENTS A COMPILATION OF INFORMATION AND DATA FROM CITY, COUNTY AND STATE ROAD AUTHORITIES AND OTHER SOURCES.



LEGEND

- STORM SEWER DISTRICT BOUNDARY
- SCHOOL DISTRICT BOUNDARY
- WATERSHED DISTRICT BOUNDARY
- INCREMENT BOUNDARY
- MUNICIPAL BOUNDARY

HENNEPIN COUNTY, MINNESOTA
TAXPAYER SERVICES DEPARTMENT
SURVEY DIVISION

SEC.16, T.117, R.21

SEC.18,T.117,R.21

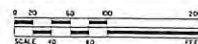


33

SEC.20,T.117,R.21

34

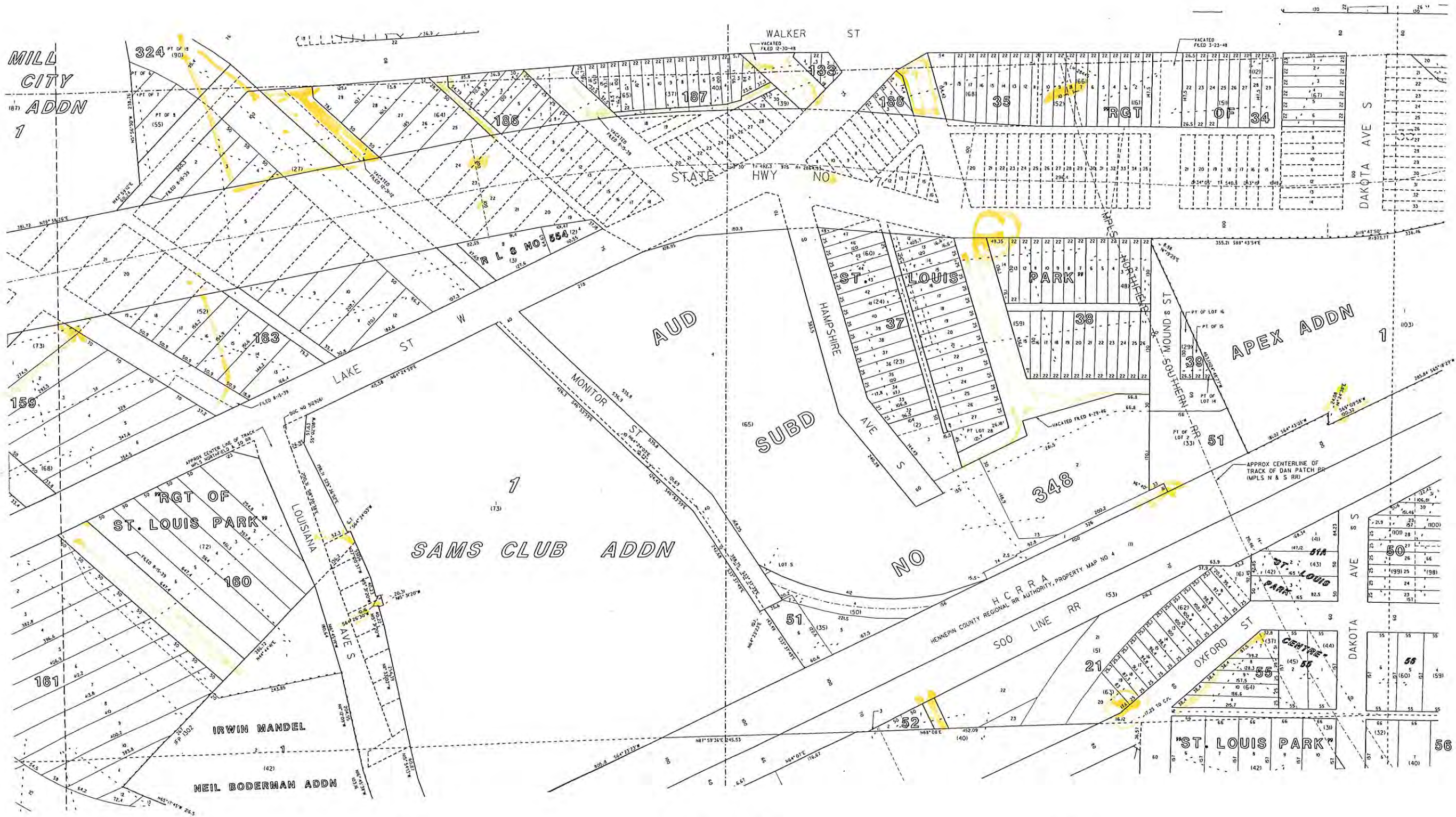
THIS IS NOT A LEGALLY RECORDED MAP. IT REPRESENTS A COMPILED INFORMATION AND DATA FROM CITY, COUNTY AND STATE ROAD AUTHORITIES AND OTHER SOURCES.



LEGEND

- STORM SEWER DISTRICT BOUNDARY
- SCHOOL DISTRICT BOUNDARY
- WATERSHED DISTRICT BOUNDARY
- INCREMENT BOUNDARY
- MUNICIPAL BOUNDARY

HENNEPIN COUNTY, MINNESOTA
TAXPAYER SERVICES DEPARTMENT
SURVEY DIVISION



SEC.16,T.117,R.21

SEC.20,T.117,R.21

43

44

THIS IS NOT A LEGALLY RECORDED MAP. IT REPRESENTS A COMPILATION OF INFORMATION AND DATA FROM CITY, COUNTY AND STATE ROAD AUTHORITIES AND OTHER SOURCES.



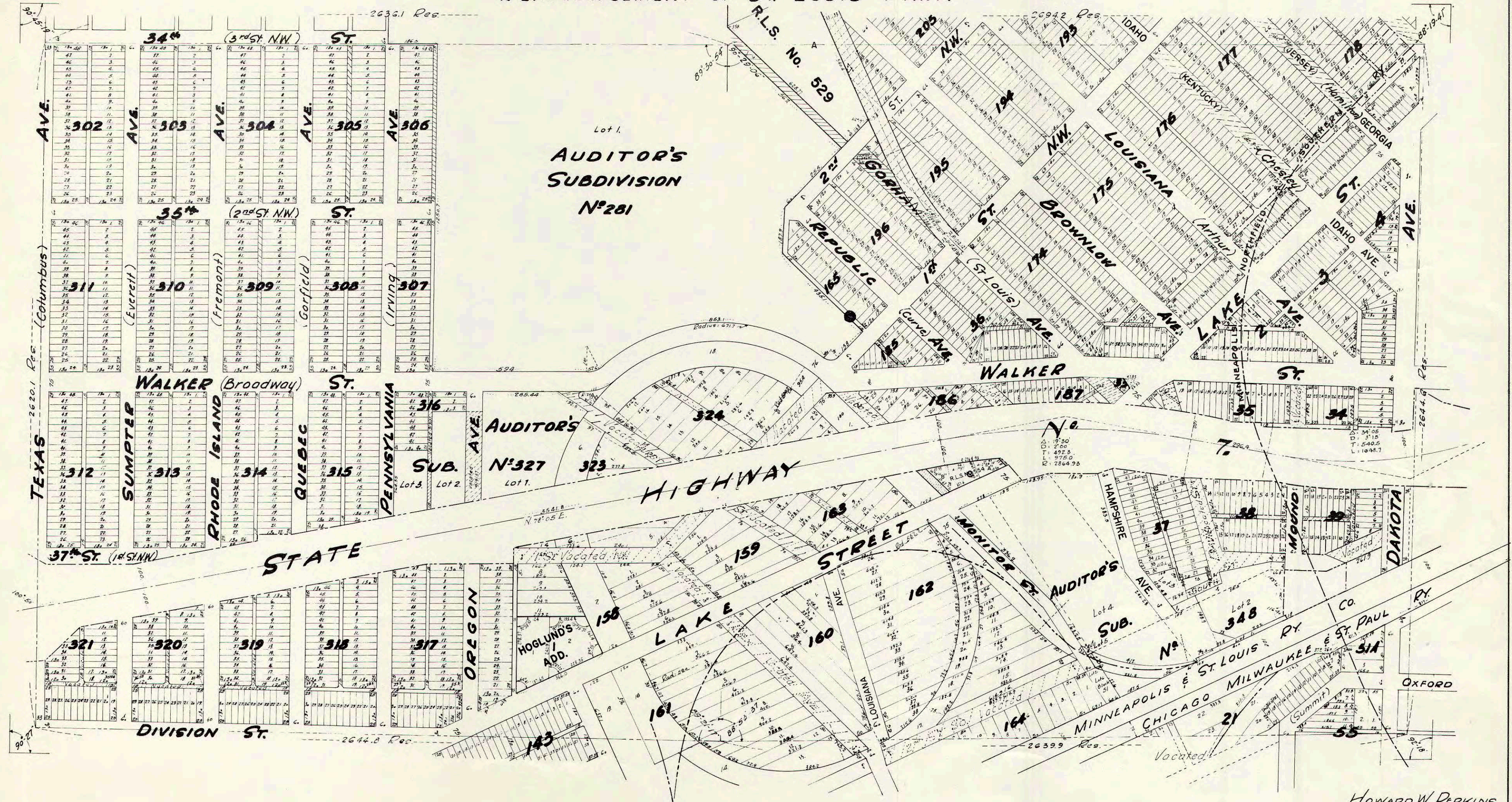
LEGEND

- STORM SEWER DISTRICT BOUNDARY
- SCHOOL DISTRICT BOUNDARY
- WATERSHED DISTRICT BOUNDARY
- INCREMENT BOUNDARY
- MUNICIPAL BOUNDARY

HENNEPIN COUNTY, MINNESOTA
TAXPAYER SERVICES DEPARTMENT
SURVEY DIVISION

S 1/2 SEC. 17, T. 117, R. 21

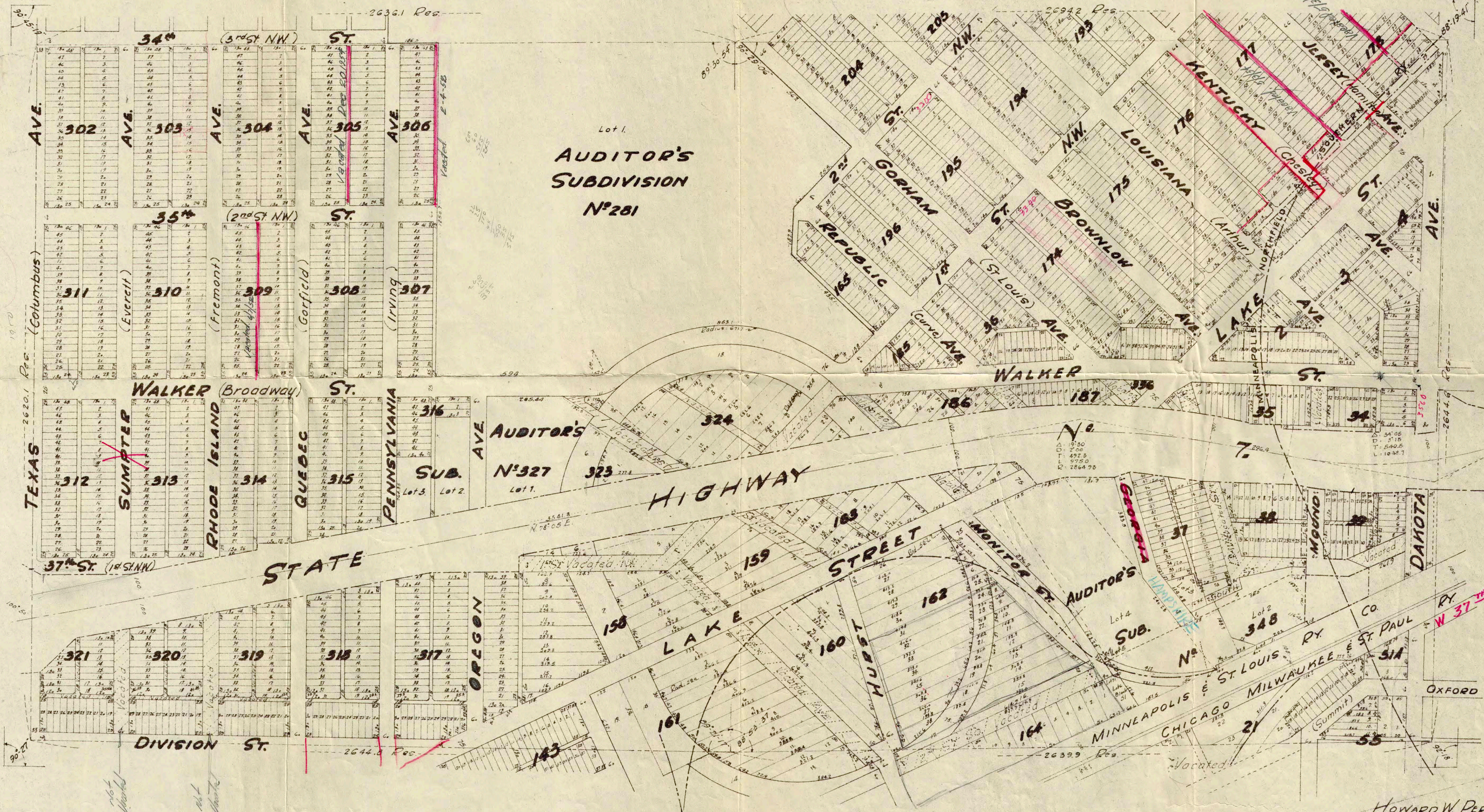
REARRANGEMENT OF "ST. LOUIS PARK"



HOWARD W. PERKINS
County Surveyor
Hennepin County, Minn.
N.S. 10-51

S 1/2 SEC. 17, T. 117, R. 21

REARRANGEMENT OF "ST. LOUIS PARK"



Howard W. Perkins
County Surveyor
Hennepin County, Minn.
May 10, 1910