



# N1/2 NW1/4 SEC.18 T.28 R.24

22

SEC.7 T.028 R.24

21



SEC.28 T.117 R.21

BOUNDARY OF LAKE DESCRIBED IN 1319 DS 179

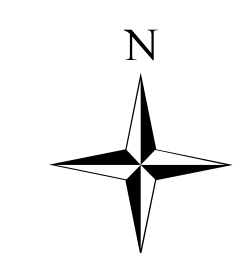
-X-

-X-

This map is a compilation of data from various sources and is furnished "AS IS" with no representation or warranty express or implied, including fitness for any particular purpose, merchantability, or the accuracy and completeness of the information shown.



COPYRIGHT © HENNEPIN COUNTY 2019



LEGEND

- STORM SEWER DISTRICT BOUNDARY
- SCHOOL DISTRICT BOUNDARY
- WATERSHED DISTRICT BOUNDARY
- TAX INCREMENT DISTRICT BOUNDARY
- MUNICIPAL BOUNDARY

# N1/2 NE1/4 SEC.18 T.28 R.24

12

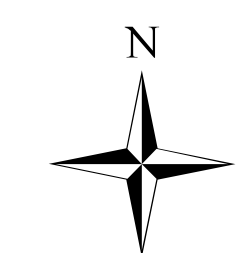
SEC.7 T.028 R.24

11



(-X-)

(-X-)



**LEGEND**

- STORM SEWER DISTRICT BOUNDARY
- SCHOOL DISTRICT BOUNDARY
- WATERSHED DISTRICT BOUNDARY
- TAX INCREMENT DISTRICT BOUNDARY
- MUNICIPAL BOUNDARY

This map is a compilation of data from various sources and is furnished "AS IS" with no representation or warranty express or implied, including fitness for any particular purpose, merchantability, or the accuracy and completeness of the information shown.



COPYRIGHT © HENNEPIN COUNTY 2021

SEC.17 T.028 R.24



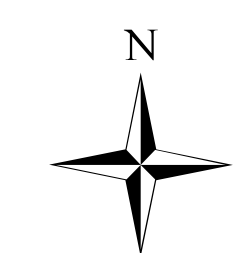
# S1/2 NE1/4 SEC.18 T.28 R.24



This map is a compilation of data from various sources and is furnished "AS IS" with no representation or warranty express or implied, including fitness for any particular purpose, merchantability, or the accuracy and completeness of the information shown.



COPYRIGHT © HENNEPIN COUNTY 2019



**LEGEND**

- STORM SEWER DISTRICT BOUNDARY
- SCHOOL DISTRICT BOUNDARY
- WATERSHED DISTRICT BOUNDARY
- TAX INCREMENT DISTRICT BOUNDARY
- MUNICIPAL BOUNDARY

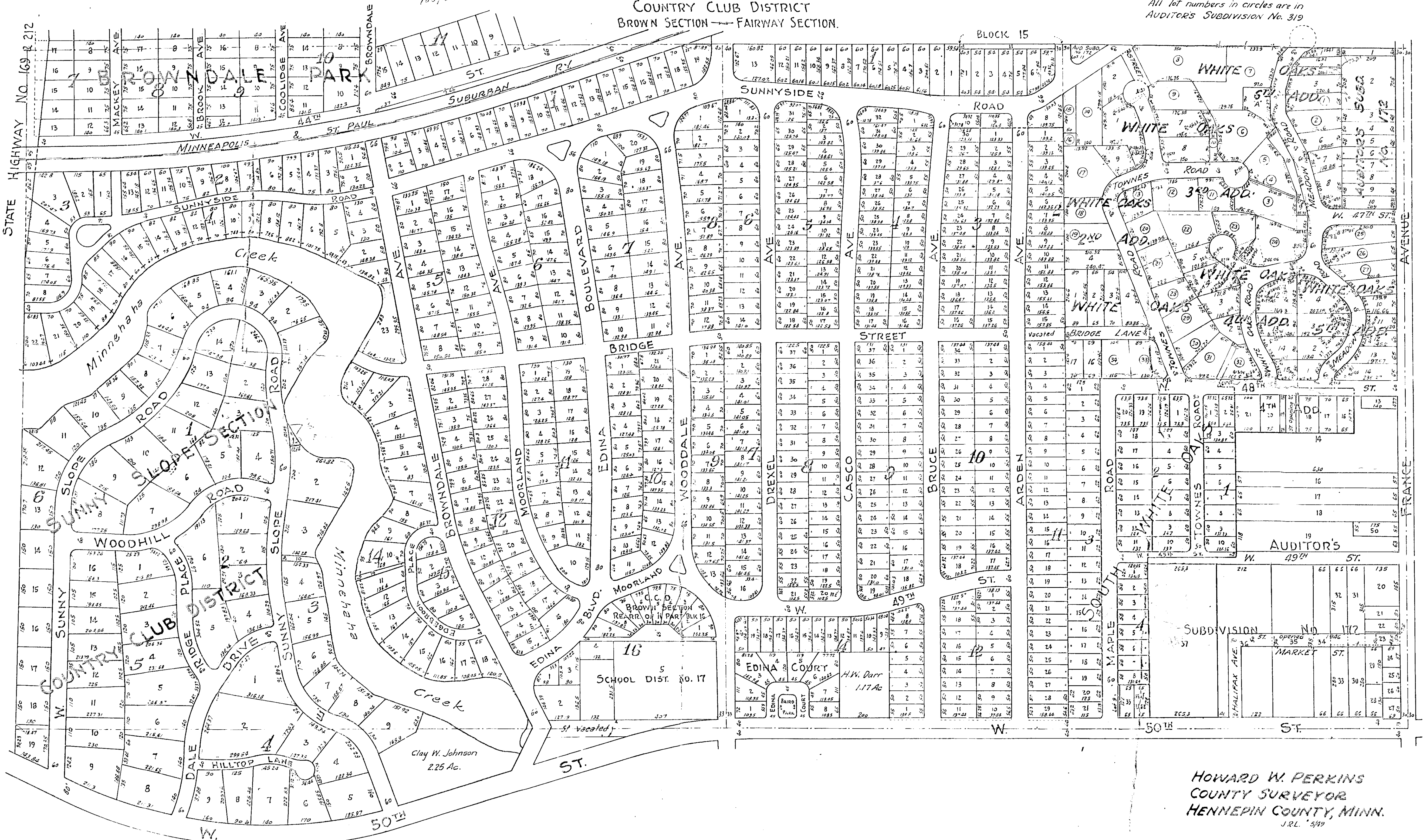
SEC.17 T.028 R.24

# N<sup>1</sup>/<sub>2</sub> OF SEC. 18-T.28-R.24

COUNTRY CLUB DISTRICT  
BROWN SECTION — FAIRWAY SECTION.

BLOCK 15

Note:  
All lot numbers in circles are in  
AUDITOR'S SUBDIVISION No. 319



HOWARD W. PERKINS  
COUNTY SURVEYOR  
HENNEPIN COUNTY, MINN.  
J.R.L. 549