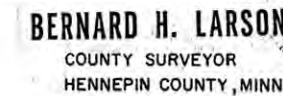


This is not a legally recorded map. It represents a compilation of information and data from City, County and State road authorities and other sources. The information on this map should be used for reference purposes only. Hennepin County does not guarantee the accuracy of material herein contained and is not responsible for any misuse or misrepresentation of this information or its derivatives.





THIS IS NOT A LEGALLY RECORDED MAP. IT REPRESENTS A COMPILATION OF INFORMATION AND DATA FROM CITY, COUNTY AND STATE ROAD AUTHORITIES AND OTHER SOURCES.



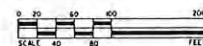
LEGEND

- STORM SEWER DISTRICT BOUNDARY
- SCHOOL DISTRICT BOUNDARY
- WATERSHED DISTRICT BOUNDARY
- INCREMENT BOUNDARY
- MUNICIPAL BOUNDARY

HENNEPIN COUNTY, MINNESOTA
TAXPAYER SERVICES DEPARTMENT
SURVEY DIVISION



THIS IS NOT A LEGALLY RECORDED MAP. IT REPRESENTS A COMPILATION OF INFORMATION AND DATA FROM CITY, COUNTY AND STATE ROAD AUTHORITIES AND OTHER SOURCES.



LEGEND

- STORM SEWER DISTRICT BOUNDARY
- SCHOOL DISTRICT BOUNDARY
- WATERSHED DISTRICT BOUNDARY
- INCREMENT BOUNDARY
- MUNICIPAL BOUNDARY

HENNEPIN COUNTY, MINNESOTA
TAXPAYER SERVICES DEPARTMENT
SURVEY DIVISION

S1/2 SW1/4 SEC.07 T.028 R.24

EDINA-24
ST. LOUIS PARK-46

SEC.21,T.17,R.21

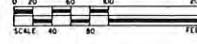


33

SEC.18,T.28,R.24

34

THIS IS NOT A LEGALLY RECORDED MAP. IT REPRESENTS A COMPILATION OF INFORMATION AND DATA FROM CITY, COUNTY AND STATE ROAD AUTHORITIES AND OTHER SOURCES.



LEGEND

- STORM SEWER DISTRICT BOUNDARY
- SCHOOL DISTRICT BOUNDARY
- WATERSHED DISTRICT BOUNDARY
- INCREMENT BOUNDARY
- MUNICIPAL BOUNDARY

HENNEPIN COUNTY, MINNESOTA
TAXPAYER SERVICES DEPARTMENT
SURVEY DIVISION



SEC.8,T.28,R.24

THIS IS NOT A LEGALLY RECORDED MAP. IT REPRESENTS A COMPILATION OF INFORMATION AND DATA FROM CITY, COUNTY AND STATE ROAD AUTHORITIES AND OTHER SOURCES.

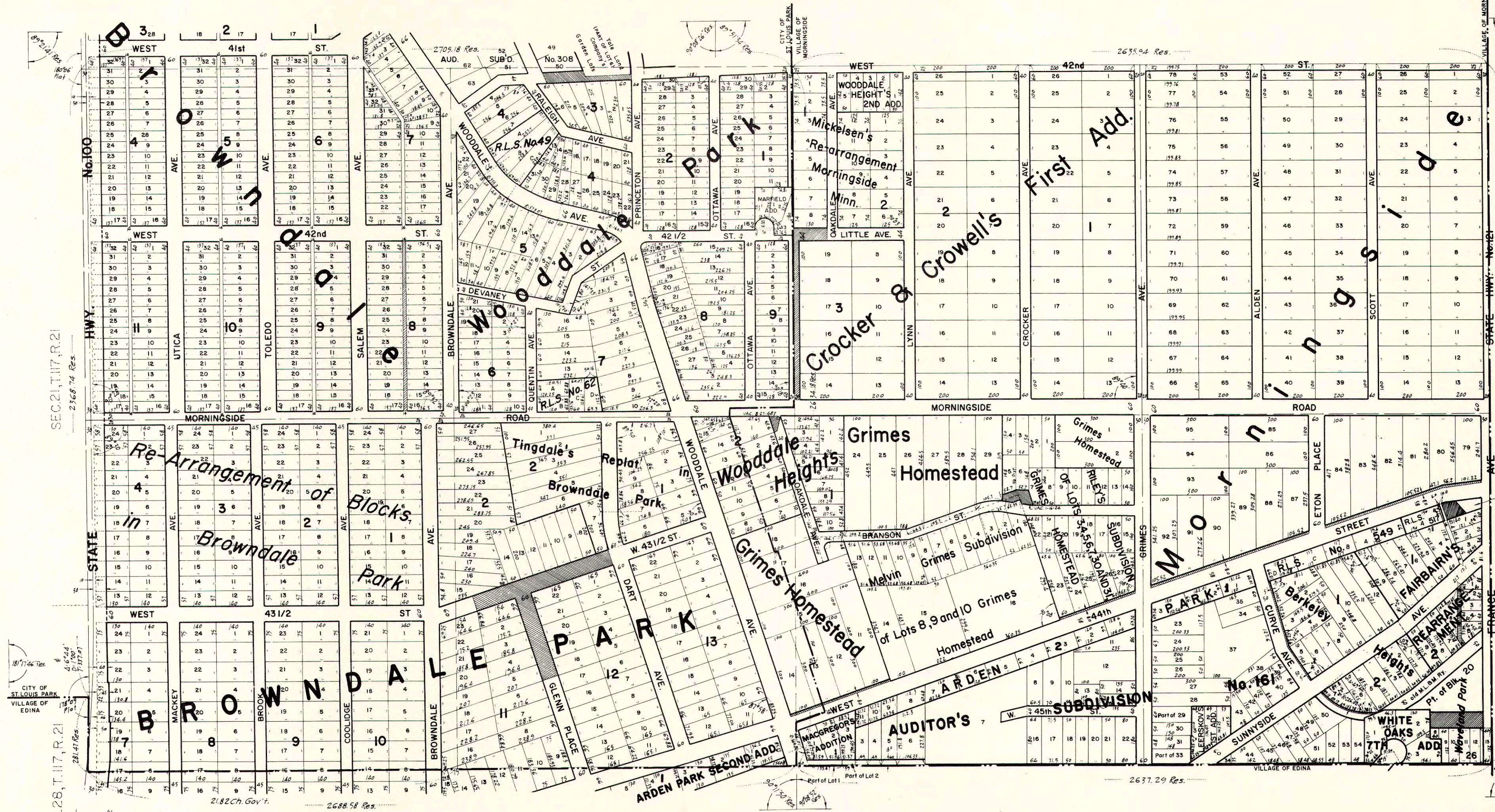


LEGEND

- STORM SEWER DISTRICT BOUNDARY
- SCHOOL DISTRICT BOUNDARY
- WATERSHED DISTRICT BOUNDARY
- INCREMENT BOUNDARY
- MUNICIPAL BOUNDARY

HENNEPIN COUNTY, MINNESOTA
TAXPAYER SERVICES DEPARTMENT
SURVEY DIVISION

S 1/2 SEC. 7, T.28, R.24



SEC. 18, T. 28, R. 24

ELMER J. PETERSON
COUNTY SURVEYOR
HENNEPIN COUNTY, MINN.