



Welcome:

*Thanks for joining us today!*

- As the meeting begins, please introduce yourself by entering your **name and organization** in the **chat box**.



# ALHC Community Conversation #3

Growing capacity and cultivating connections:

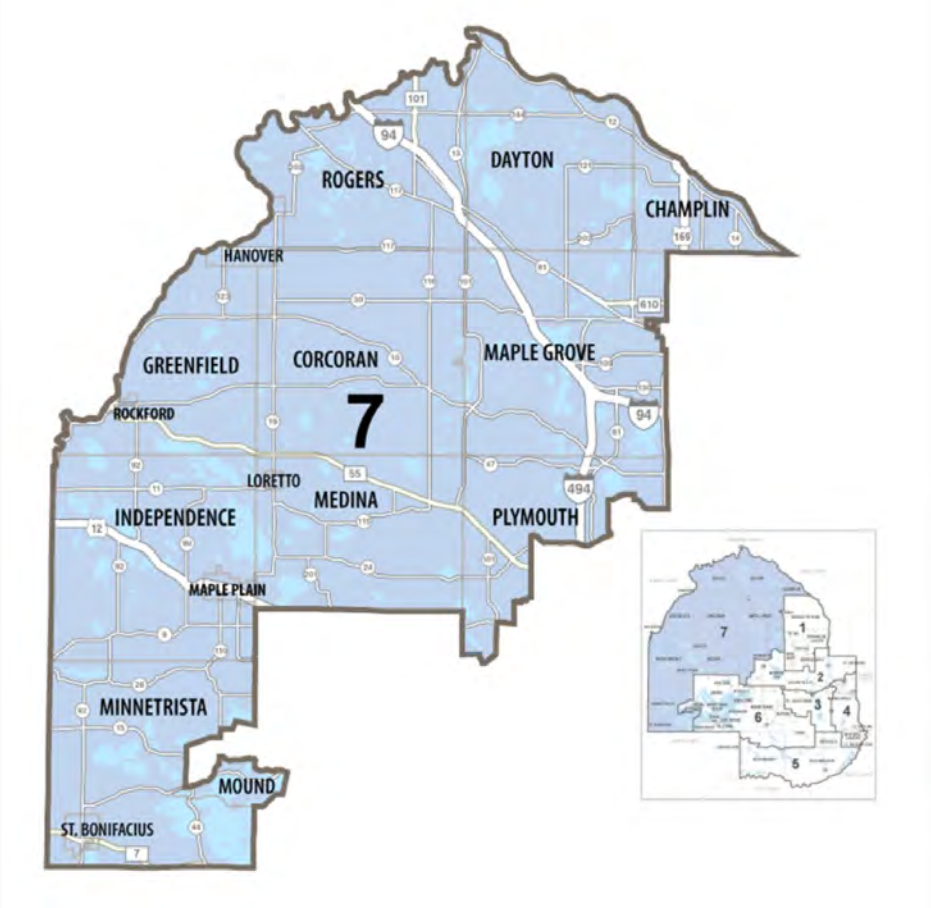
*What does it take for local government supported food growing projects to thrive?*

Active Living Hennepin County Partnership meeting, September 24, 2021





# Kevin Anderson, Commissioner, District 7





# Agenda

---

10:00 a.m. Welcome & Introductory Remarks:

- **Kevin Anderson**, Commissioner, District 7, Hennepin County
- **Denise Engen**, Active Living Hennepin County

10:05 a.m. Presentations

- **Four Sisters Farmers Market and Farm**  
*Crystal Myslajek, Hennepin County, Housing and Economic Development*  
*Elizabeth Day, Native American Community Development Institute (NACDI)*
- **Capacity and choices**, City of Crystal  
*Scott Berggren and Stacy Chouinard, City of Crystal Recreation Department*
- Q & A

10:40 a.m. Sharing local experiences:

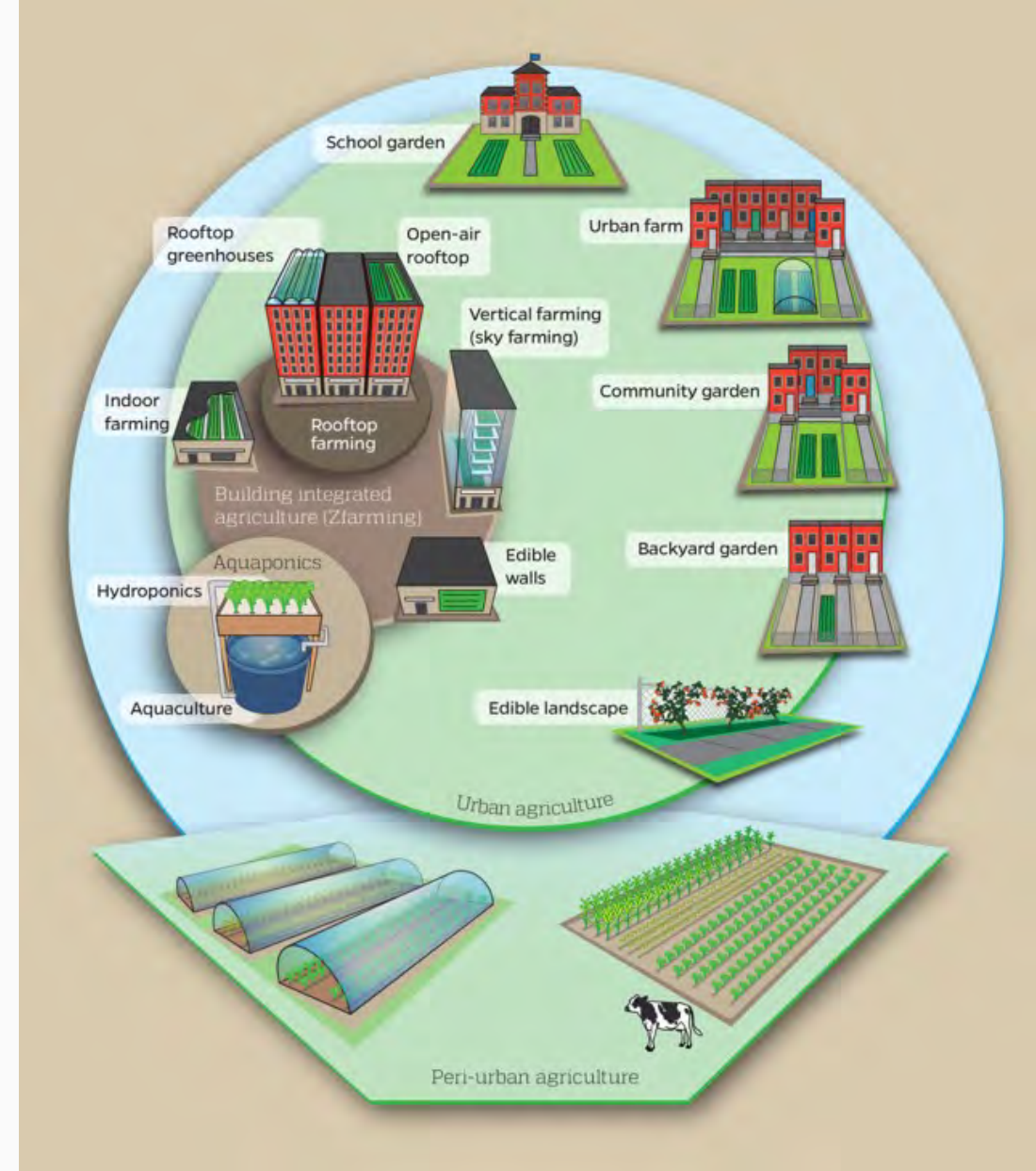
- *Hennepin County, City of Rogers, City of Brooklyn Center ...*
- *...and you!*

11:00 a.m. Additional discussion and Q & A (OPTIONAL)

# Benefits of urban agriculture (community & individual)

- Improved health
- Improved social capital
- Access to a healthy food source
- Leisure and outdoor recreation
- Social interactions and cultivation of friendships

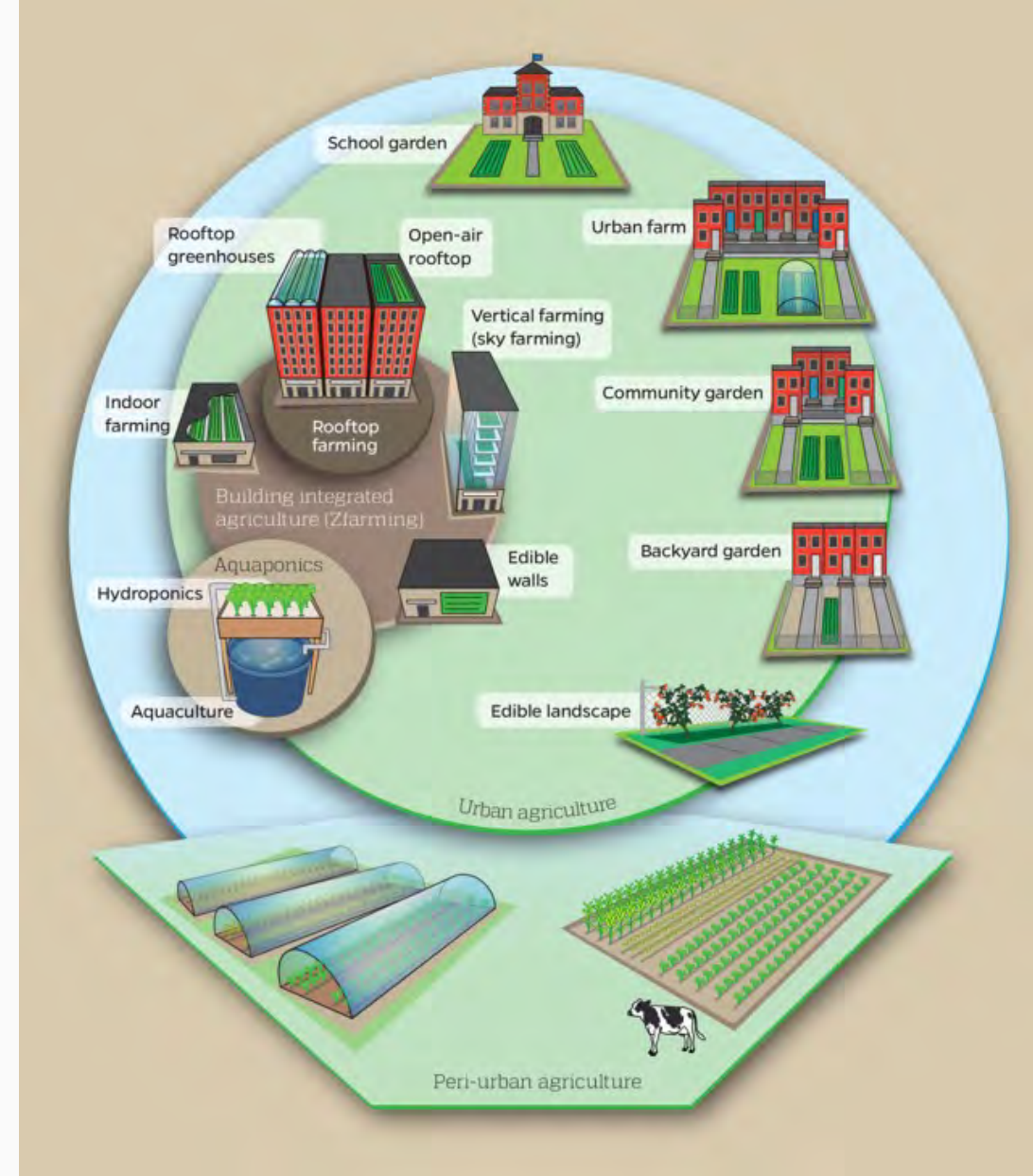
Sources: [Role of Urban Agriculture in a Secure, Healthy, and Sustainable Food System](#) | BioScience | Oxford Academic (oup.com)



# Benefits of urban agriculture (community & individual)

- Economic benefits
- Invests in green spaces
- Supports the local food system

Source: [Role of Urban Agriculture in a Secure, Healthy, and Sustainable Food System](#) | BioScience | Oxford Academic (oup.com)



# Equitable Strategies

- Improve access to healthy food
  - Via farm stands, farmers markets, community gardens and CSAs; growing/sell culturally appropriate food
- Improve economic health
  - Creating jobs; providing training and skills development; save families \$
- Revitalize communities
  - Provide safe, attractive, welcoming spaces; Foster sense of community and create safer neighborhoods

Source: PolicyLink | [Growing Urban Agriculture: Equitable Strategies and Policies for Improving Access to Healthy Food and Revitalizing Communities](#)

Active Living Hennepin County Partnership meeting, September 24, 2021





# Four Sisters Farmers Market and Farm

Elizabeth Day, Native American Community Development Institute, and  
Crystal Myslajek, Hennepin County Housing and Economic Development



# Native American Community Development Institute

- Make Voting a Tradition
- Four Sisters Farmers Market and Farm
- American Indian Cultural Corridor
- All My Relations Arts

Active Living Hennepin County Partnership meeting, September 24, 2021



# Four Sisters Farmers Market

- Indigenous-centered food market – working with native-run farms and food producers
- Develop a healthy, Indigenous food system that is accessible and welcoming to people in the American Indian Cultural Corridor
- 1414 E Franklin Ave, Minneapolis
- Open Thursdays June 3 - October 28, 2021, 11 am - 3 pm





## Midtown Community Works and Hennepin County Regional Railroad Authority (HCRRA)

- Improve access, inclusivity, and community safety
- Unused unbuildable vacant land between the Midtown Greenway and E 29<sup>th</sup> St in East Phillips neighborhood
- Search for community partners with an interest in programming open space

# Four Sisters Farm

- Engagement is the biggest part of what this project is about
  - Work with community advisory group
  - Takes time to build the network
- Early in the planning and development – initial goals to be refined with community input:
  - Provide access to fresh healthy foods
  - Serve as a learning environment for Indigenous farming, medicine, and lifeways
  - Celebrate the community's cultural assets



# community engagement summary

## who participated?

Over 200 people attended an on-site event October 12, 2020, where participants provided feedback on survey poster boards. Additionally, 29 community members provided feedback in an online survey Oct 13 to Oct 25, 2020 available in English, Spanish and Somali.

### Event Day Transportation to Site

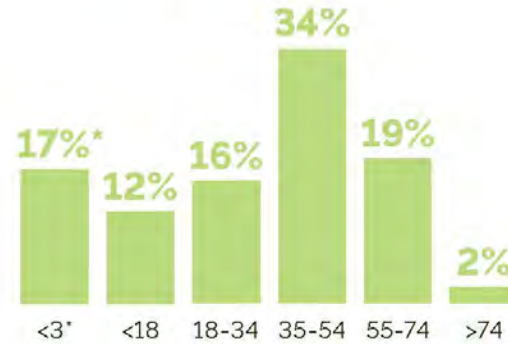


### Online Response to Transportation to Site



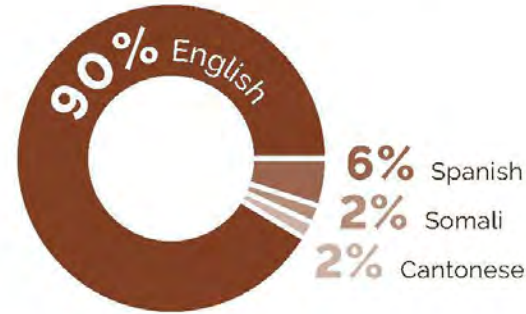
\*The survey responses to this question lead us to believe that we have reached residents near the site.

### Age Range of Respondents



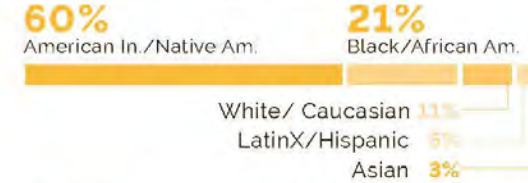
\*responses from families with children under 3

### Primary Language of Respondents

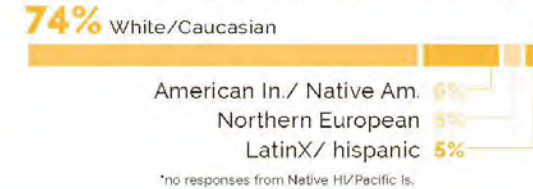


\*no responses from Hmong speakers

### Event Day Respondents Race/Ethnicity



### Online Respondents Race/Ethnicity



\*no responses from Native HI/Pacific Is.

## event photos



## top elements participants want to see on the site



# HCRRA/County Role

- Environmental assessment
- Site and landscape planning
- Community engagement
- Tree planting
- Water access installation
- Raised bed installation
- Mowing and tree maintenance
- Graffiti removal
- Support in identifying funding sources for programming



# NACDI Role

- Collaborate on site design
- Community engagement
- Manage, plan and coordinate programming and use of site
- Communicate issues or maintenance needs to HCRRA
- Maintain and insure structures installed by NACDI



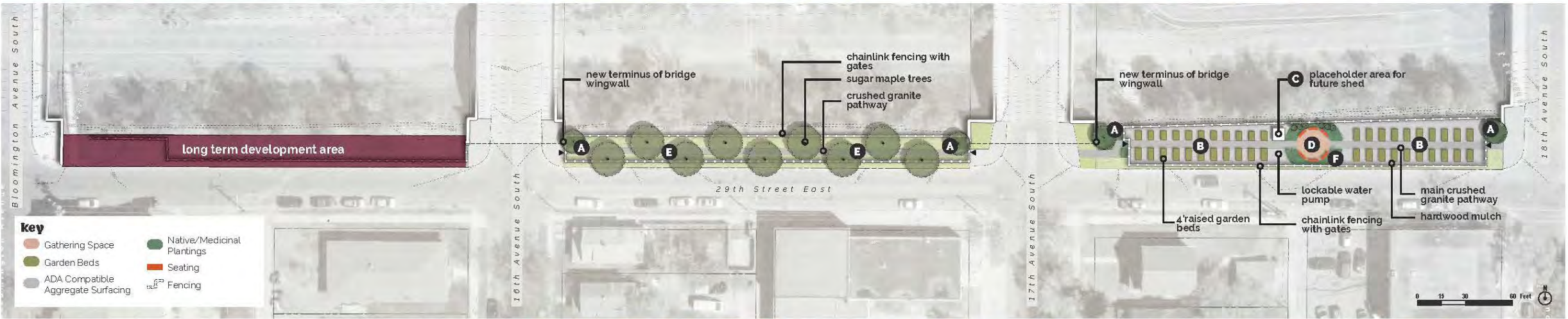
**A** native plantings (birch & dogwood)



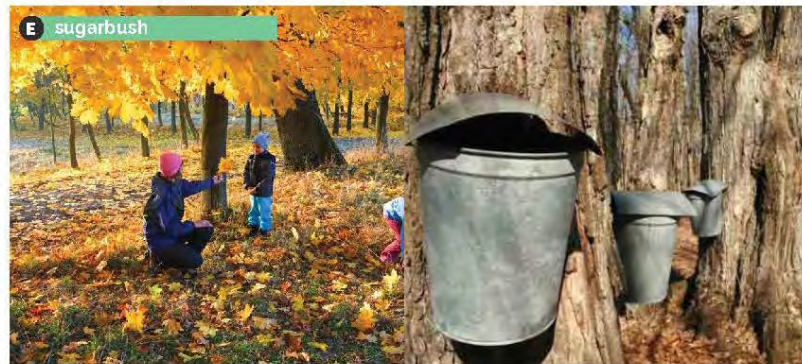
**B** raised garden beds with crushed granite pathway



**C** future shed & rain barrels



**D** circular gathering space with possible precast concrete benches



**E** sugarbush



**F** native plantings (juneberry, white cedar, little bluestem)





# Phase I project activities

---

- 2021 spring and fall tree planting and ceremony
- 42 raised beds, including standing and wheelchair accessible
- Compact ADA accessible granite walkways
- Water service installation
- Wall removals for site circulation and pedestrian safety
- Grading and fence relocation
- Farming and education activities to begin in 2022

# Capacity & Choices

September 24, 2021







# Southbrook Community Carden

## ...How It's Going

- 114 total plots
- Each city rents 57 plots (size 20 x 20)
- Shared responsibilities
- Cultural Diversity in gardening
- Huge waitlist





# Edible Courtyard

## How It started...

- TED Talk
- Funding
- Underutilized space
- Volunteer energy





# Edible Courtyard

## How It Went...

- More Funding
- New Programming
- COVID-19
- Lots of Produce





# Edible Courtyard

## ...How It's Going

- Accessible again
- No external funding
- Little volunteer energy





# New Farmer's Market

- Local Vendors
- Fresh Produce
- EBT/SNAP & Market Bucks
- Plans for 2022







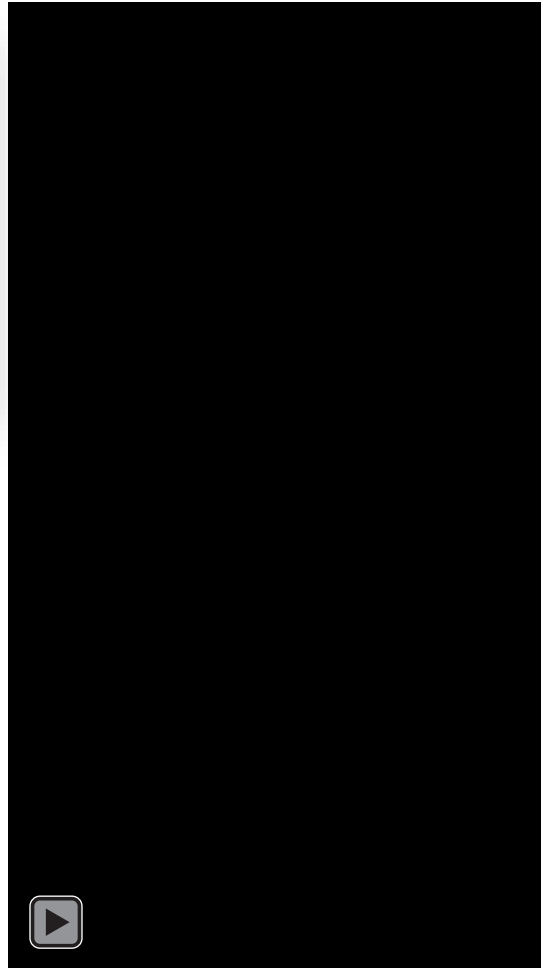
# What's Next

## Increase Capacity

- **Garden Plots**
- **Courtyard Volunteers**
- **Outreach Expertise**



# Thank you!





# Panel Q&A:

---

*What are your questions for our presenters?*

# Sharing local experiences

---

- Hennepin County Public Health Promotion
- City of Rogers
- City of Brooklyn Center
- ...and you!

Active Living Hennepin County Partnership meeting, September 24, 2021





Hennepin County  
Public Health  
Promotion



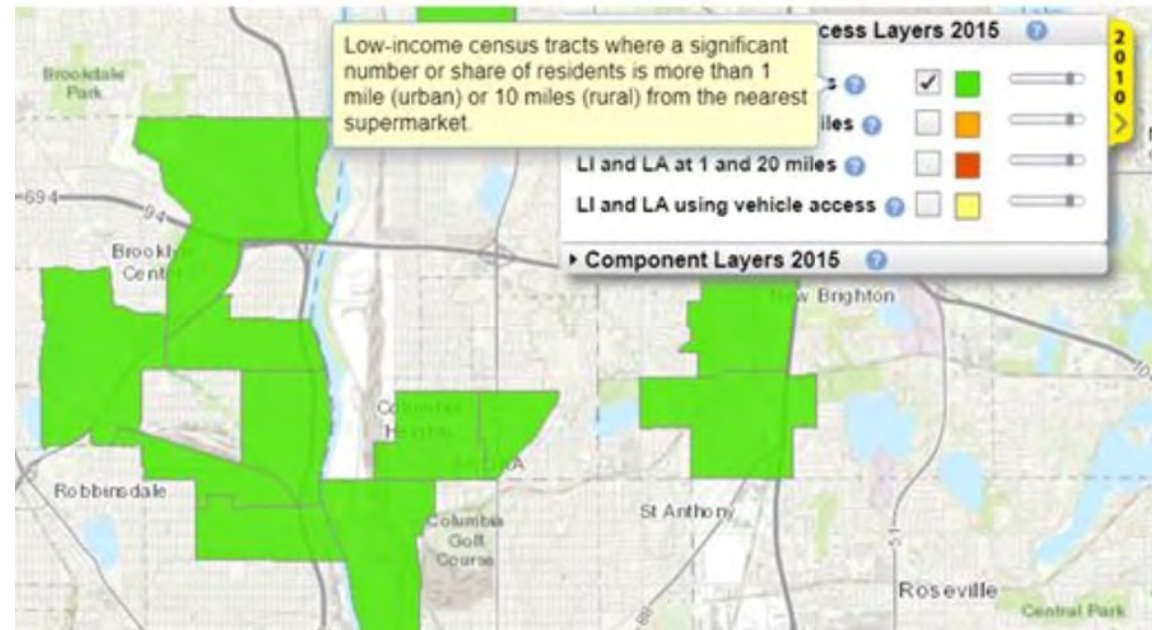
# Greenhouse Project

The City is committing to construct a greenhouse along with growing food in twelve (12) tower planters, with long term efforts to provide healthy, diverse greens and vegetables to residents.



# Scope and Issues

- Lack of access to affordable healthy food
- Interruptions in food supply chain
- Lack of knowledge about how to grow and cook with fresh produce



# Greenhouse Project

- Deep Winter Greenhouse for year-round food production
  - Culturally-appropriate produce
- Job Opportunities
- Training for residents
- Tool library
- CSA style pay-what-you-can membership model
- Scalable and flexible program and design
- Urban agriculture





## Resident interaction with Towers

- 451 votes @ 3 summer events. 3 events—Hmong Celebrate your Parks, Community Health Fair and Back to School Bash.
- We had a total of 22 kids participate in Booktime Blossoms this summer. The program is being continued though the fall.
- Resident interest is out there – mailing list, garden club, offers of volunteers



# Greenhouse

- Slow process to staff to get greenhouse structure completed
- A lot of different parts that all need to come together – utilities, building pad, structure, etc.
- Cost of paying contractor to get it ground vs City Staff



# Discussion

---

- *Does your community operate or sponsor community gardens, farmer's market(s) or other healthy food access initiatives?*
- *What are your challenges, successes or concerns or questions about these?*
- *How are you engaging the community about healthy food access? Connecting to cultural communities?*
- *What questions do you have of other partners?*





## Hennepin County Active Living

Denise Engen

Laura Fredrick

Robb Luckow

Crystal Myslajek



Funding for this project was provided from the Minnesota Department of Health through the Statewide Health Improvement Partnership (SHIP). SHIP supports community-driven solutions to expand opportunities for active living, healthy eating and commercial tobacco-free living.

A young child with curly hair is standing in a garden. The child is wearing a light blue t-shirt with a colorful geometric pattern. In the background, there is a red brick house with a white window, a blue barrel, and various green plants and trees.

# ALHC Community Conversation #3

Growing capacity and cultivating connections:

*What does it take for local government supported food growing projects to thrive?*

Active Living Hennepin County Partnership meeting, September 24, 2021

