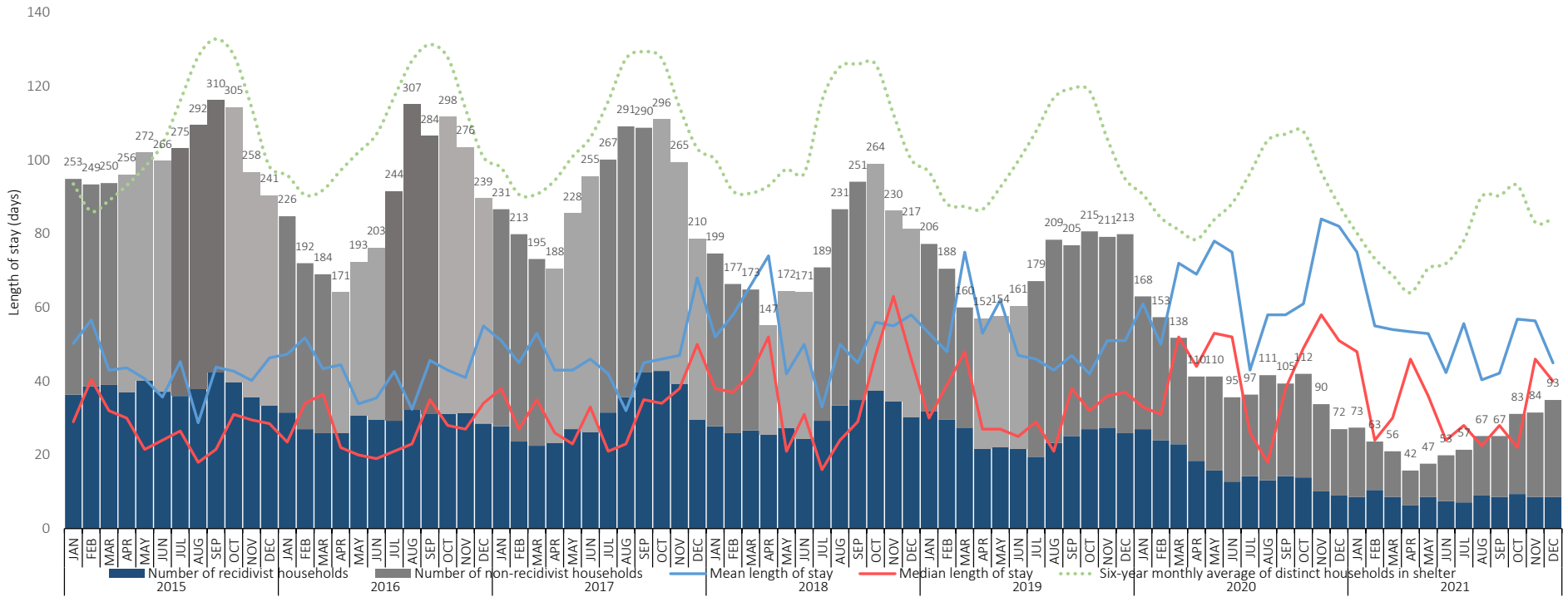


## Hennepin County Operated Family Shelter Utilization



		<b>December 2021 values:</b>	
<i>RARE</i>	When homelessness is rare, we are doing more preventative work to keep households in their homes.	<b>93</b>	Number of distinct households in shelter
<i>BRIEF</i>	When homelessness is brief, households who do enter shelter are given immediate help to get out within 30 days.	<b>45</b>	Mean length of stay (days)
		<b>40</b>	Median length of stay (days)
<i>NONRECURRING</i>	When homelessness is nonrecurring, households exit shelter in the right setting, connected to the right supports, with the right information on accessing community help—and, therefore, do not return to shelter.	<b>23</b>	Number of recidivist households



## Data definitions

MEASURE	DEFINITION	DETAILS/METHODOLOGY
<b>Number of recidivist households</b>	The number of distinct households in shelter who had experienced a shelter stay at any point in the prior two years to the current stay.	Households are identified as distinct case numbers. Per month defined as month of shelter check in. Shelter stays are uncollapsed (i.e., not merged into one stay depending on length of service interruption, as is done in length of stay calculation methods), so that families whose stay in shelter spans multiple months are counted for each month stay falls in.
<b>Number of non-recidivist households</b>	The number of distinct households in shelter who had <b>not</b> experienced a shelter stay at any point in the prior two years to the current stay.	Households are identified as distinct case numbers. Per month defined as month of shelter check in. Shelter stays are uncollapsed (i.e., not merged into one stay depending on length of service interruption, as is done in length of stay calculation methods), so that families whose stay in shelter spans multiple months are counted for each month stay falls in.
<b>Mean length of stay in days</b>	The mean length of stay, in days, that families stayed in shelter, calculated by month of exit.	Shelter stays are collapsed when check in date is less than or equal to ten days from previous check out. This measure only counts sheltered nights, i.e., excludes unsheltered days that describe an entire homelessness episode. No cap is set on length of stay. Mean is calculated for each month by exit date of shelter stay.
<b>Median length of stay in days</b>	The median length of stay, in days, that families stayed in shelter, calculated by month of exit.	Shelter stays are collapsed when check in date is less than or equal to ten days from previous check out. This measure only counts sheltered nights, i.e., excludes unsheltered days that describe an entire homelessness episode. No cap is set on length of stay. Median is calculated for each month by exit date of shelter stay. The median has been identified as the best measure of what a "typical" length of stay in shelter is.
<b>Six-year monthly average of distinct households in shelter</b>	Per-month average number of distinct families, calculated over previous six years on a rolling basis.	Count of distinct families per month over previous six years, averaged by month and used as a rolling measure to reference with recent shelter data.

## Contact for Report Questions

CONTACT NAME	Mark Legler, Principal Planning Analyst, Hennepin County Office to End Homelessness
CONTACT EMAIL	<a href="mailto:mark.legler@hennepin.us">mark.legler@hennepin.us</a>
CONTACT PHONE	(952) 220 - 1890

