

I-35W/Lake St. Access

HENNEPIN COUNTY MINNESOTA

Support \$25 million in state bonding for transit/access project that connects people to jobs

The state is poised to invest approximately \$157 million to improve I-35W between 42nd Street and the I-94 Commons in 2017. Combining the I-35W Transit/Access Project with the state's I-35W investment brings benefit to the neighborhood, region and the state. Accessibility improvements will increase region wide transit use along I-35W and improve conditions along the local street network. Now is the time to act.

Enhance community access and safety

- Improve access to the future Bus Rapid Transit system on I-35W and accommodate transit transfers to the current County Road 3 (Lake Street) via new transit station. Improve access to major employers along the corridor and health care facilities.
- Improve accessibility and provide greater connectivity between the local, regional and interstate transportation systems.
- Provide for the safe movement of vehicles and improved safety for pedestrians, bicyclists and transit users.
- Improve livability by enhancing the sense of community through supporting revitalization and economic vitality.
- Enhance the environmental quality of this urban landscape.



Funding needs remain

The improvements to accessibility will not take place without state funding. Support the county's \$25 million bonding request.

Contacts

Hennepin County Intergovernmental Relations

Mary Beth Davidson

Director

Office: 612-348-5120

Cell: 651-450-1335

mary.davidson@hennepin.us

Kareem Murphy

Deputy Director

Office: 612-596-9711

Cell: 612-801-0954

kareem.murphy@hennepin.us

Hennepin County Transportation Project Delivery

James Grube

County Highway Engineer

Office: 612-596-0305

james.grube@hennepin.us

Websites

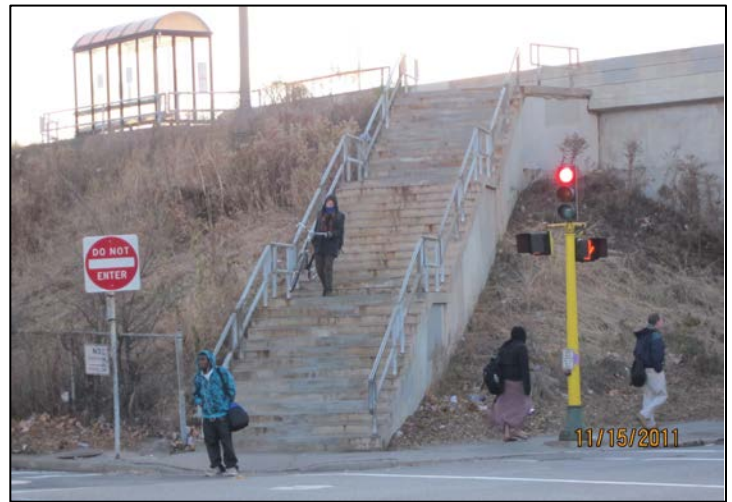
hennepin.us

www.35lake.com

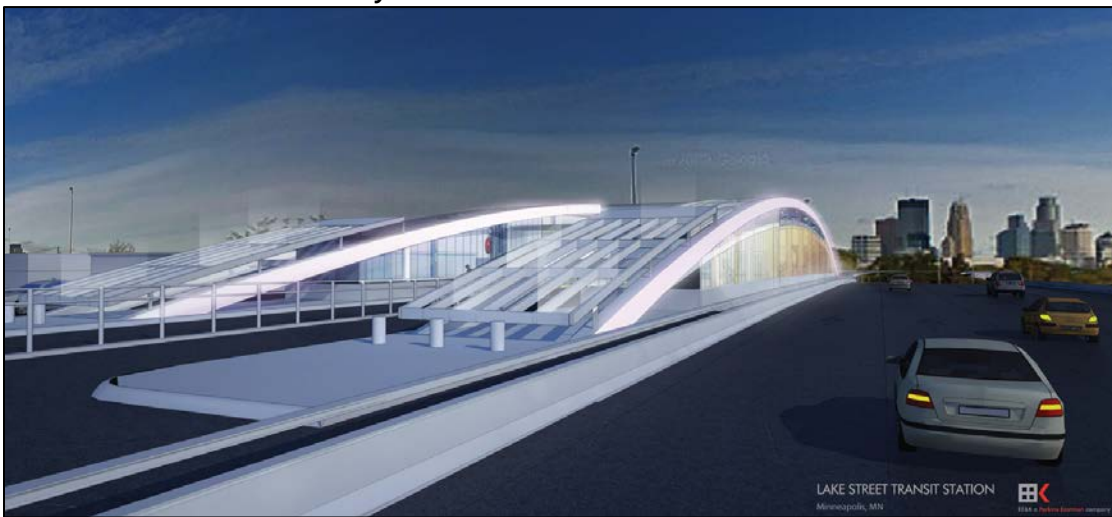
Current Conditions at I-35W and Lake St. on bridge at transit stop



From Lake St looking up to transit stop on I-35W



View from I-35W with facility in the center between northbound and southbound lanes



View of Lake Street level entrance

