



LAKE STREET CONNECTIONS

Streetscape Design

Project Advisory Committee

June 17, 2016

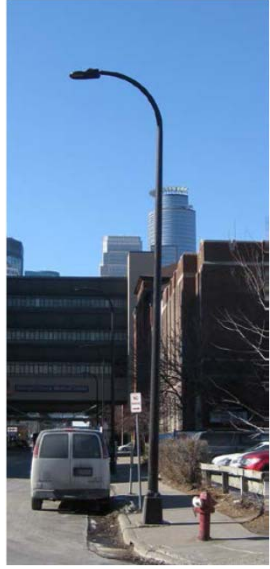


Base Level Streetscape Elements

- Street Lighting – up to the equivalent cost of a standard “high - low” system for a pedestrian corridor
- Sidewalks w/ ADA Crosswalks
- Street trees & grates



Standard “High – Low” system Light Poles for Pedestrian Corridors



Base Elements – Street Trees & Grates



Enhanced Level Streetscape Elements

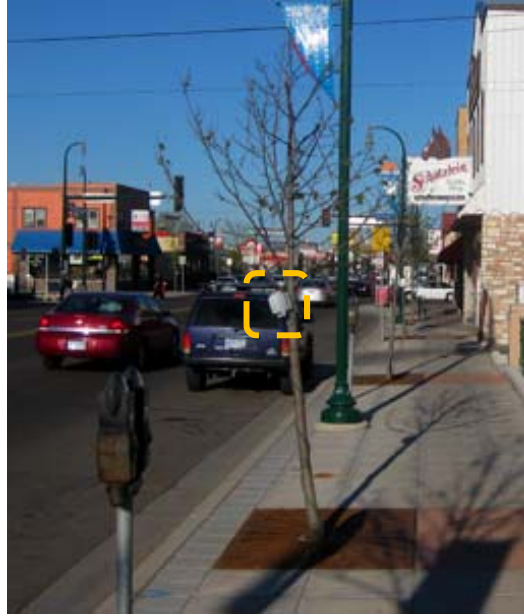
- Lighting costs exceeding a “standard” system
- GFCI circuit for street light poles
- GFCI circuit for tree lighting
- Decorative Benches, Litter Receptacles, Bike Loops
- Decorative Parking Lot Fencing and buffer plantings
- Neighborhood Identity Banners (w/banner brackets)
- Planter Pots



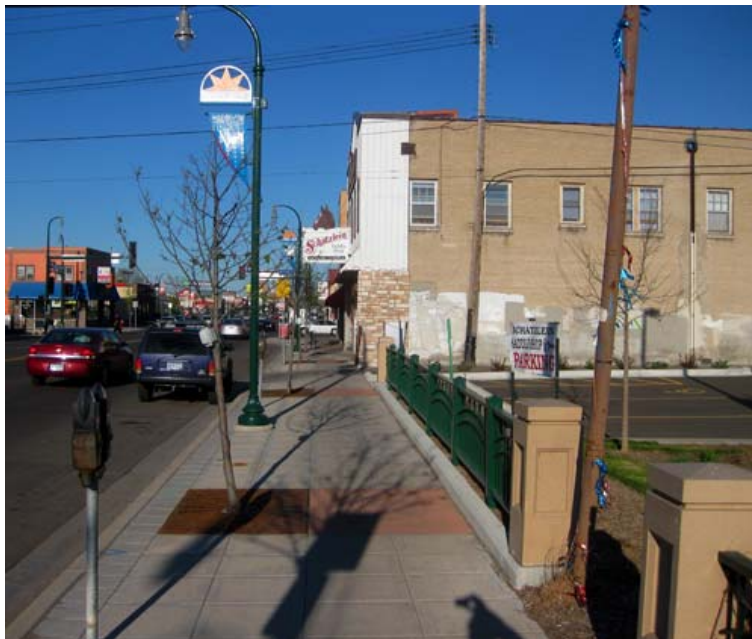
Street Light Pole and Luminaire (Partial enhanced cost)
Enhanced Elements - Banner brackets & GFCI circuit



Enhanced Element – GFCI Receptacle in tree



Enhanced Element – Decorative Fence



Enhanced Elements – Litter Receptacle, Bike Loops & Bench



Existing - Neighborhood Identity Banners and Brackets



Enhanced Elements – Decorative Planter Pots

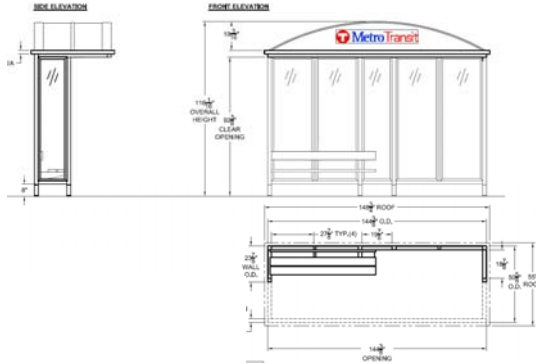


Metro Transit Bus Shelters

- Local Stops
- ABRT Stops



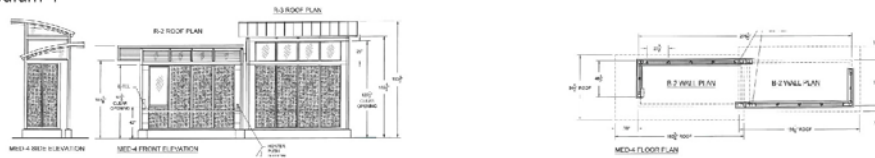
Local Transit Stop Shelter



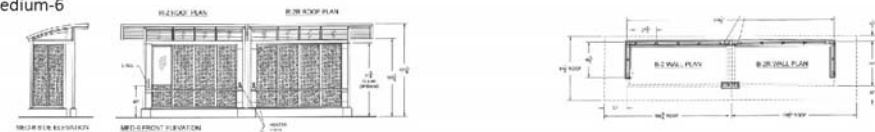
Metro Transit ABRT Shelters



Medium-4



Medium-6



Discussion

