



Glenwood Avenue Study Group – Meeting #4

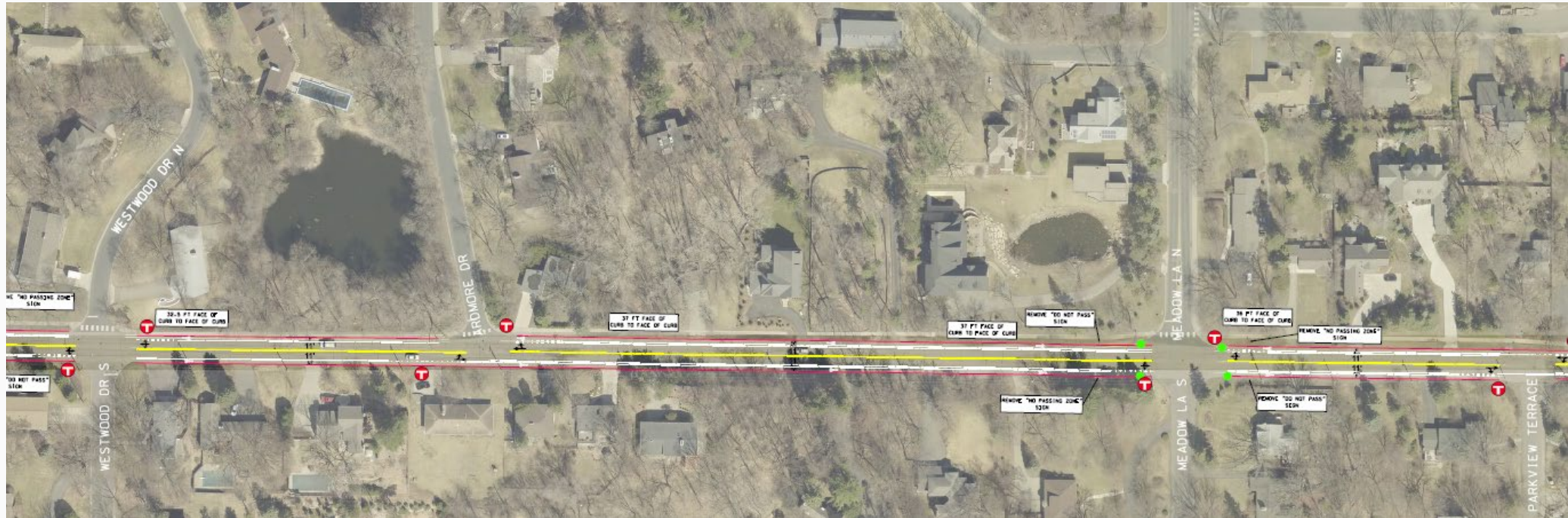
August 1, 2019

Agenda

- Introductions
- Draft layout review
- Public and study group feedback
- Next steps

Draft layout review

Draft layout review



Public and study group feedback

Highway 100 bridge

What we've heard

- Sidewalks are not ADA compliant
- No dedicated space for bikes
- Can sidewalks be shared by people biking and walking?

Next steps

- County to examine interim means to facilitate bicycle connection
- Bike gap, sidewalk and ADA upgrades would require a larger study in coordination with MnDOT
 - This long-term project is outside the scope of 2020 repaving project

Landscaping at Highway 100 median

What we've heard

- Desire for planted median at Highway 100
- Others have expressed interest in narrowing the median to make room for an eastbound bike lane

Next steps

- Barb to submit proposed design and county staff will circulate for review
 - Proposal will need to meet Hennepin County landscape guidelines (to be finalized in 2019)
 - The County would require an agreement for maintenance of the landscaping
- Landscaping will need to be balanced with any future bridge reconfiguration for people walking and biking

Neighborhood signage

What we've heard

- Residents would like to see signage to signal that people driving are entering a residential area

Next steps

- Additional neighborhood signage is outside the scope of the 2020 repaving project
- Narrower lanes, bike lanes, bumpouts, and other infrastructure can provide queues for drivers to slow down

Parking

What we've heard

- Parking study reveals that parking is not well utilized on Glenwood
- Parking is available on side streets
- Neighborhood residents would like to see balance for all modes, and retain parking where possible

Next steps

- Remove parking along entire corridor – County proposes to obtain a 'no parking' resolution from Golden Valley City Council
- Re-establish boulevard space between Natchez and Ottawa
- County staff coordinating with Minneapolis Park Board to discuss parking situation near the Wirth Park Beach pavilion

Crosswalks

What we've heard

- Residents would like designated locations for crossing Glenwood Ave
- The City will sign Meadow and Natchez as pedestrian routes in 2021

Next steps

- Pedestrian signage installation will serve as a trigger to re-evaluate crossing data at Meadow and Natchez
- The County will consider other temporary improvements to enhance these crossings if/when implemented

Sidewalk between Ardmore and Westwood

What we've heard

- Improve comfort for people walking by moving sidewalk further from the roadway

Next steps

- City will lead this effort (likely to come after the repaving project)
 - Staff will develop cost estimates and coordinate with county to identify funding and plan for implementation
- In the interim, the presence of bike lanes will serve as a buffer between people walking and moving vehicles

Theodore Wirth Parkway

What we've heard

- Improve intersection skew, including where trails converge at the intersection
- Driver confusion around 4-way stop

Next steps

- County staff are meeting with the Minneapolis Park Board to discuss realignment of trail crossings at intersection corners

Protected bike lane

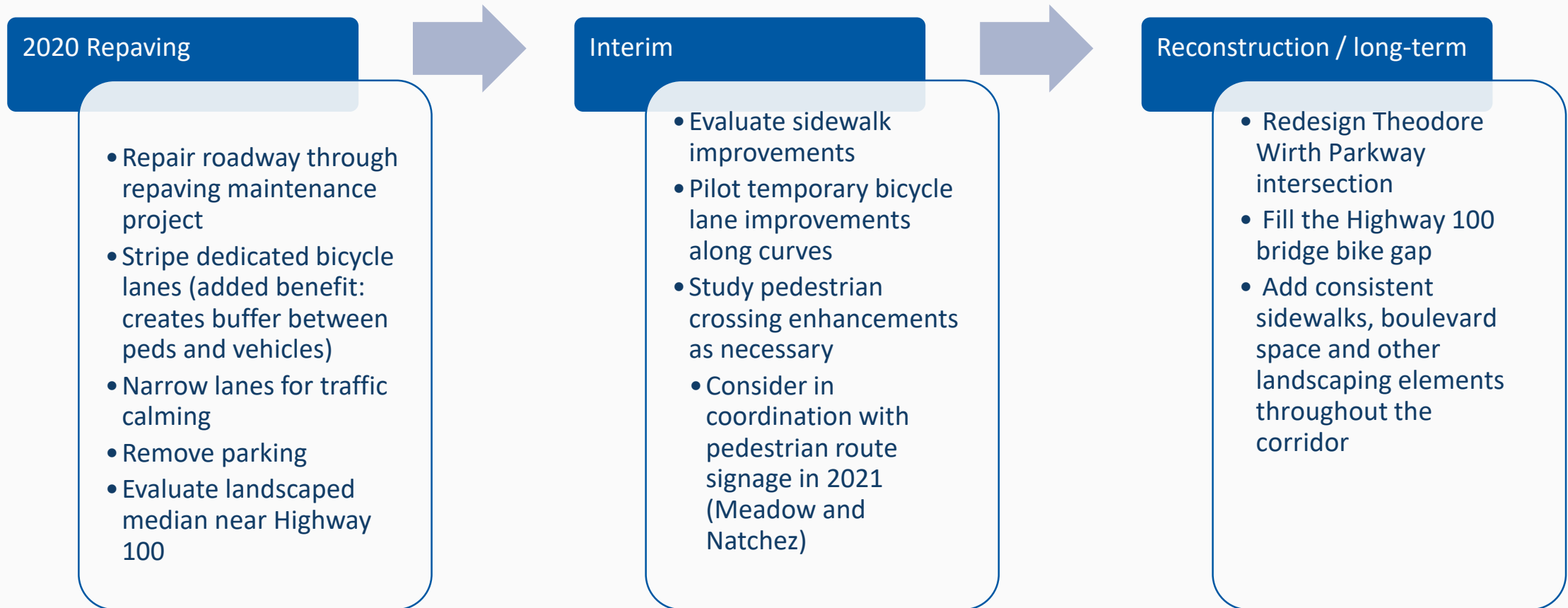
What we've heard

- Desire to test improvements for protected bike lane
- Winter maintenance is a key factor in decision

Next steps

- Hennepin County not ready to implement protected bike lane corridor-wide; however, there may be an opportunity to pilot mumble strips at curved areas

Timeline of improvements



Next steps

Next steps

- Hennepin County to refine draft layout
- Study group update to be posted on project website:
<https://www.hennepin.us/glenwoodgoldenvalley>
- Open House – August 8th (5-7 p.m.) at Brookview (Valley Room)
- Present project to Golden Valley City Council in September
- Determine future meeting date

Bob Byers, Hennepin County

Robert.Byers@hennepin.us

Emily Kettell, Hennepin County

Emily.Kettell@hennepin.us

Marc Nevinski, Golden Valley

MNevinski@goldenvalleymn.gov

