

HENNEPIN COUNTY

MINNESOTA

Memo

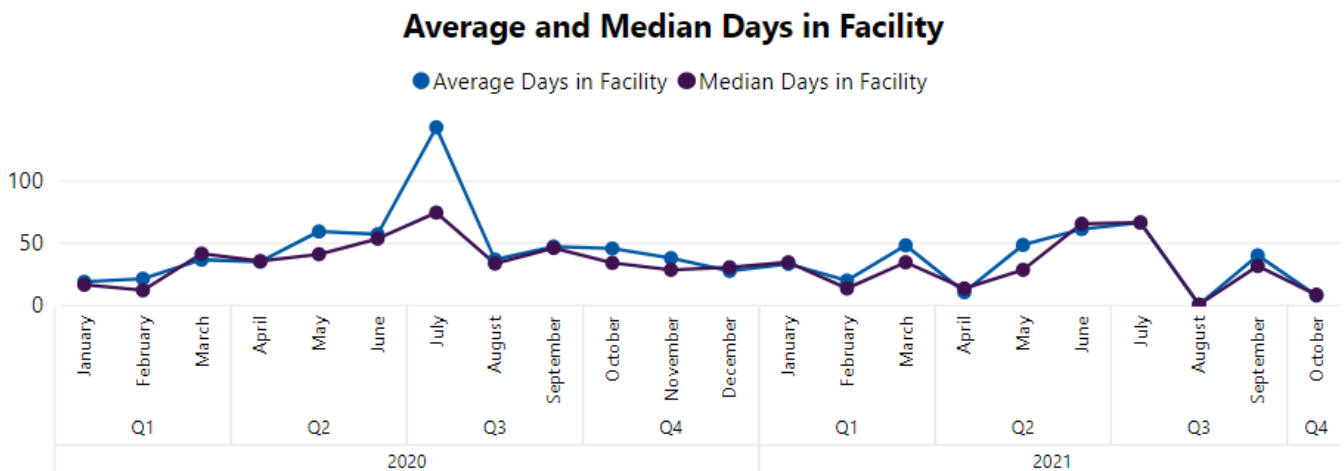
To: Karen Kuglar

From: Andrea Hoffmann

Date: November 19, 2021

Re: Clients released from the JDC to an RTC

Since the beginning of 2021 through October, there has been 472 total releases from the JDC. Of which, 8% (n=40) have been released to an RTC. The following indicates the average and median days clients released to an RTC spent in the JDC by month in 2020 and 2021. Although there was a slight increase in length of stay in June (median = 65 days) and July (median = 66 days) of 2021, the length of stay in September (median = 31 days) is relatively consistent with time spent in the JDC for clients released to an RTC in 2020 and the length of stay in October decreased (median = 8 days).

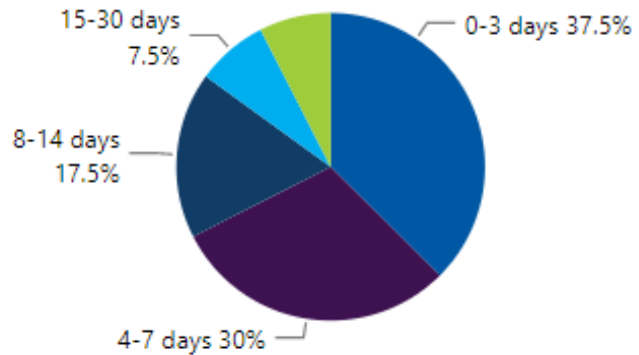


Department of Community Corrections and Rehabilitation
Business Intelligence Team
Suite 1050 701 Building, MC 806
701 South Fourth Avenue
Minneapolis, MN 55487
hennepin.us



Since there are several factors that may contribute to the duration a client spends in the JDC that is difficult to assess, the amount of time clients remained in detention once they were ordered to be released to an RTC was examined. Of the 40 youth released to RTCs in 2021, few (8%, n=3) remained in the JDC more than 30 days after being ordered compared with over one-third (38%, n=15) who are released within 3 days of their court order. Two of these were ordered for release prior to Hennepin County's Youth Residential Treatment Center (YRTC) close date for accepting referrals.

Days between Order and Release



Given the small number of clients who are released to an RTC each month, the time between their order date and release date varies. While the median has been relatively consistent throughout the year (typically between 4 and 10 days), the average tends to spike when one, or few, individuals remain in the JDC for much longer than others released during the same month. For example, there were five youth released to an RTC in September, with three of the five spending 4 days in the JDC after being ordered to an RTC and two released more than 15 days after court order.

Average and Median Days between Order and Release Date

