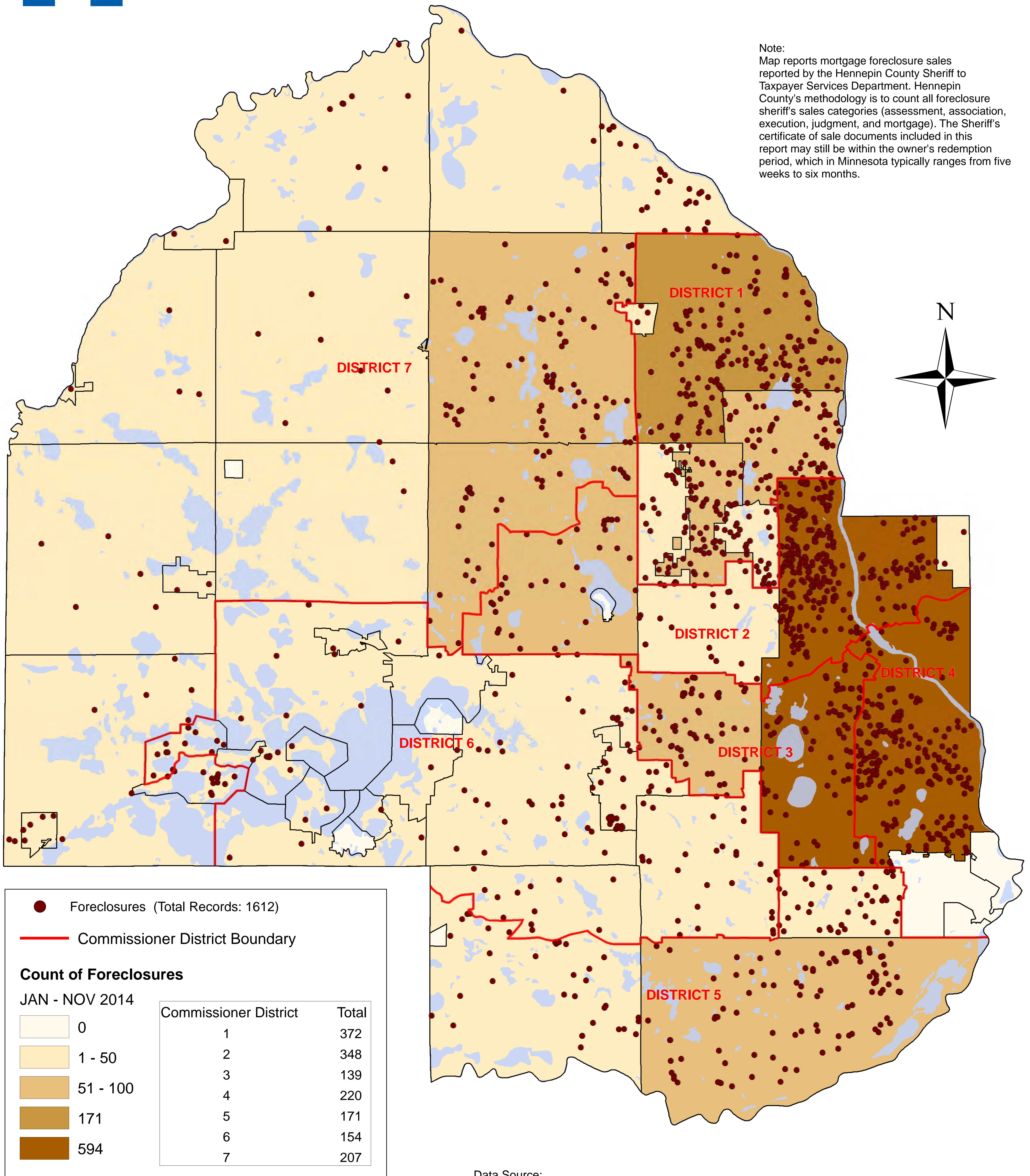




Distribution of Foreclosures Through November 2014 Hennepin County

Note:
Map reports mortgage foreclosure sales reported by the Hennepin County Sheriff to Taxpayer Services Department. Hennepin County's methodology is to count all foreclosure sheriff's sales categories (assessment, association, execution, judgment, and mortgage). The Sheriff's certificate of sale documents included in this report may still be within the owner's redemption period, which in Minnesota typically ranges from five weeks to six months.

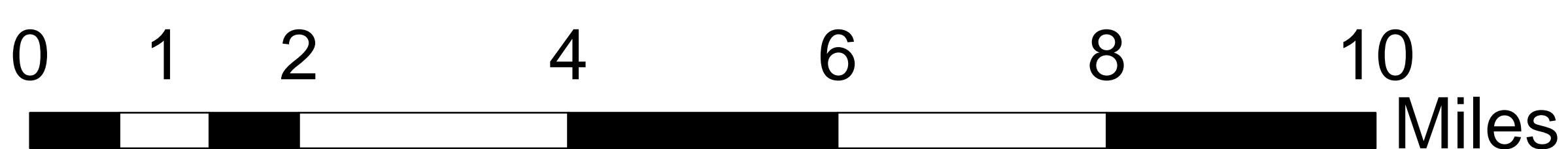


● Foreclosures (Total Records: 1612)

— Commissioner District Boundary

Count of Foreclosures
JAN - NOV 2014

Count of Foreclosures	Commissioner District	Total
0	1	372
1 - 50	2	348
51 - 100	3	139
171	4	220
594	5	171
	6	154
	7	207



Data Source:
November 2014 Sales Extract, Hennepin County Sheriff's Office
Total Records: 1612
Records Successfully Geolocated: 1611 (100%)
Records Unsuccessfully Geolocated: 1 (0%)

Map Produced by Hennepin County
R&RE Services Department
Survey Division
December 31, 2014