



Hennepin County Minnesota

# EAB is *STILL* Here: EAB Preparedness in Hennepin County

Mike Reinikainen

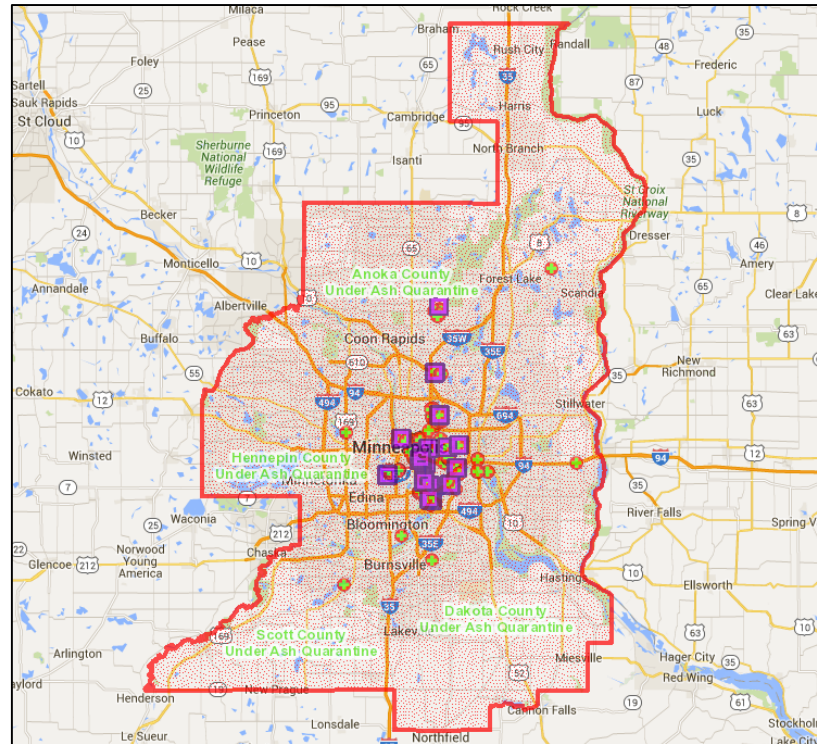
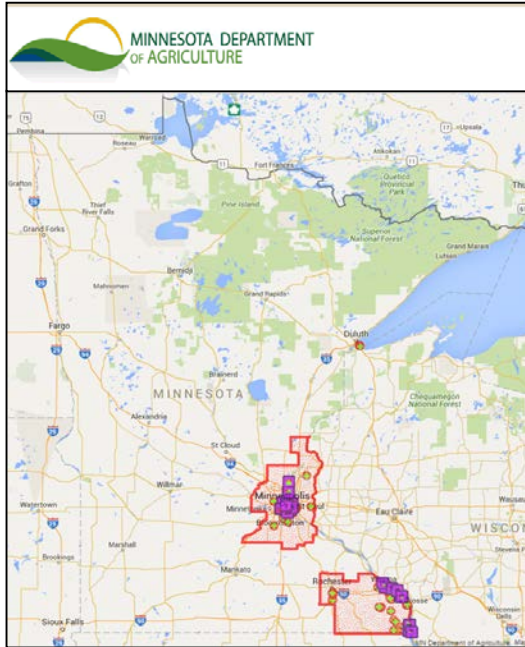
Natural Resources Partnership Meeting

December 1<sup>st</sup>, 2015



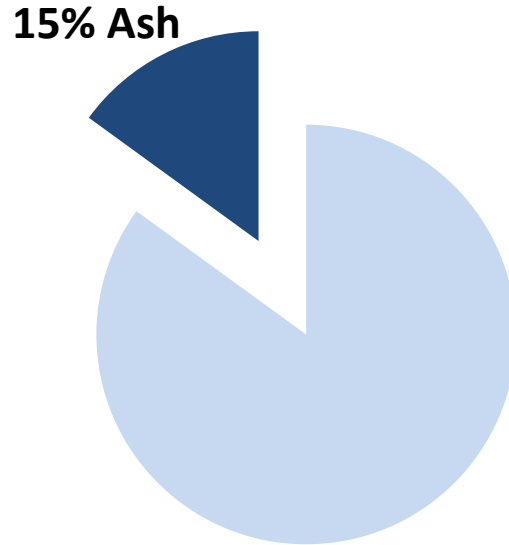
- Welcome: meeting goals and agenda
- What are cities doing?
- What is HC Government doing?

# December 2015 EAB Quarantine Extent



# Potential impact of EAB on trees in Hennepin County

- 45 cities in HC
  - 40 within 15 miles of EAB infestations
- ~ 6 million trees in maintained areas
  - ~15% or nearly 1 million of the total trees in the county are ash trees



# What are cities doing?

## Average HC City:

- Has a tree inventory (63%) and **ash** pop. of 19,600 trees<sup>1</sup>
  - 14% of total canopy comprised of ash
  - 79% of ash trees > 5” diameter
  - 38% of ash trees > 12” diameter
- Has a plan for wood disposal (87%) and some staff trained for tree disease id and removal (52%)<sup>2</sup>
- Has conducted EAB education/outreach for citizens (78%)<sup>2</sup>
- Is willing to work collaboratively on this issue (87%)<sup>2</sup>

MN DNR<sup>1</sup>  
HC Environment and Energy<sup>2</sup>

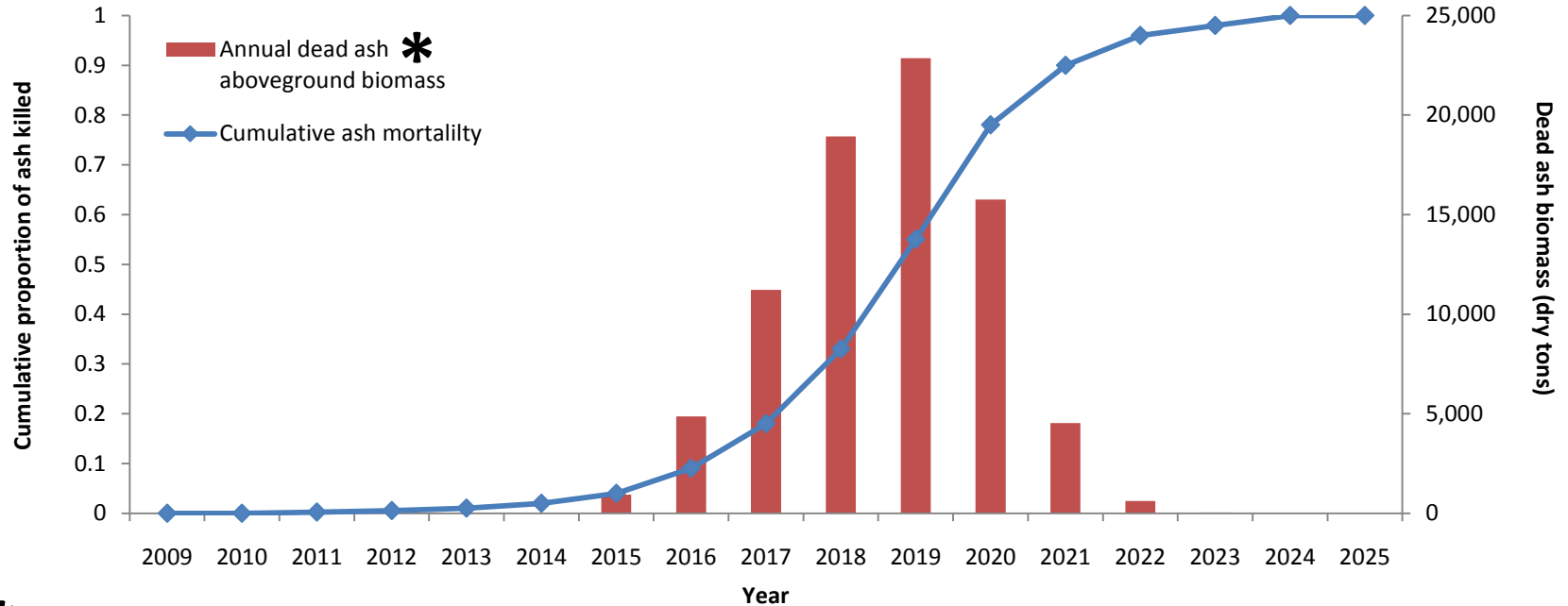
# What are cities doing?

## Average HC City:

- Does not have EAB plan (74%), EAB-specific ordinances, or dedicated funding for dealing with EAB (78%)<sup>2</sup>
- Has not explored local wood markets (61%) and has not identified additional marshalling yards or disposal sites (59%)<sup>2</sup>

MN DNR<sup>1</sup>  
HC Environment and Energy<sup>2</sup>

# Expected ash mortality in HC



# What is HC doing?

Our efforts are two-fold:

- Internally, leading EAB response across departments/groups within HC government
- Externally, determining our county-wide role



# What are we doing internally?

Estimated ~15,000 ash on Hennepin County property across multiple departments/work areas

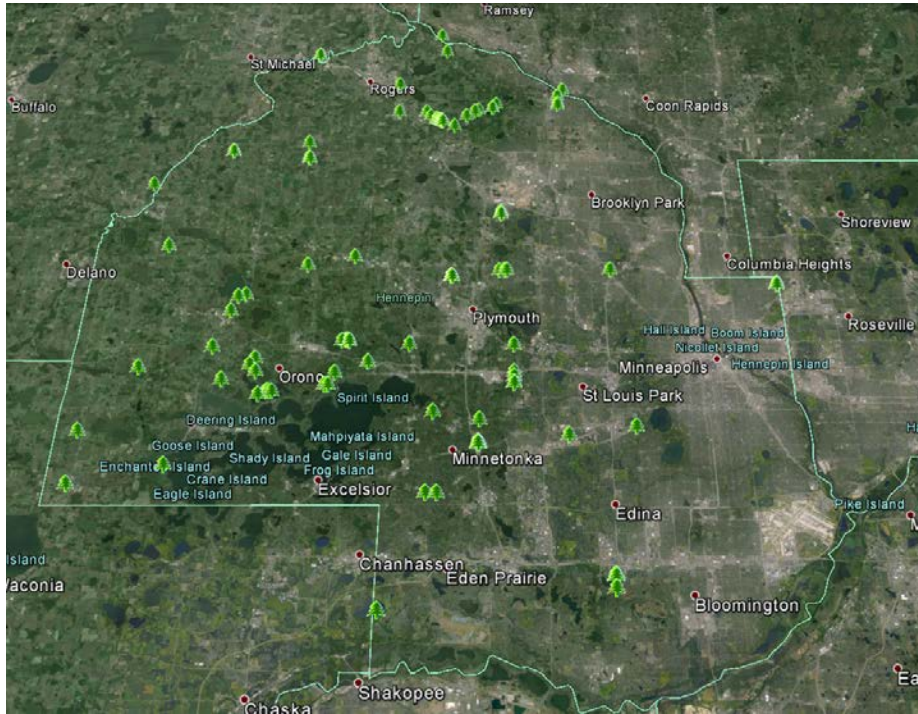
- Hennepin County Regional Rail Authority (e.g., 55 miles of corridor such as the Midtown Greenway)
- Facilities Services (e.g., 117 facilities such as libraries)
- Real Estate (e.g., 615 tax forfeited properties)
- Transportation and ROW (e.g., 571 miles of road corridors)

# What are we doing internally?

- Creating a unified inventory across departments and work areas
- Drafting an EAB Plan
  - Staged removal (5-7 years) and replacement (2:1) across facilities and corridors
  - Treatment of environmentally significant trees (5-7 years)
- Using a gravel bed nursery to promote an increase in canopy and an increase in tree species diversity

**Overall, looking for ways to creatively and cost effectively manage for EAB and increase county-wide tree canopy**

# Example: HC Disease Tree Program



- Focus has been Dutch elm disease and oak wilt
- All county corridors are examined for diseased trees in late-summer/fall
- Hundreds of removals over winter
- Expanding program to begin staged removals and replacement of ash adjacent to other diseased trees

# Example: HC Gravel Bed Nursery



- Adult Corrections Facility – Plymouth, MN
- 40' x 90'
- 500 trees
- 14 species/varieties
- Fully irrigated
- Room for expansion
- Existing greenhouse
- Centrally located in county
- 2015: 9 projects, 300 trees planted (~\$80/tree)

# What are we doing externally?

- Determining the role of the county, we are:
  - Coordinating communication between HC organizations (e.g., Natural Resources Partnership)
  - Providing information and technical support
  - Supporting lobbying for state financial support for EAB efforts
  - **Evaluating** need for marshalling yards and avenues for utilization of ash wood
  - **Evaluating** a funding program for EAB-related projects