

# Indicator: Foreign-born mothers

Births to mothers who were born outside of the United States or US territories

## Key Findings

- The proportion of births to foreign-born mothers is considerably higher in Hennepin County compared to Minnesota, or national figures.
- About three-quarters of births to Asian and Hispanic mothers were to mothers born outside of the United States, while half of births to black mothers were to those foreign-born.
- The proportion of births to foreign-born Hispanic and Asian mothers has declined, while the proportion of births to foreign-born black mothers has increased slightly since 2005.

## Overview

In 2014, 4,886 births, or 29 percent of all births in Hennepin County, were to foreign-born mothers. There has been little change in the percent of births to foreign-born mothers in Hennepin County in the past 10 years. The proportion of births to foreign-born mothers is considerably higher in Hennepin County compared to Minnesota or national figures.

Tracking statistics on local births to immigrant mothers can help health care providers better understand the varied cultural backgrounds of the families they serve. An awareness of population changes can help providers plan pregnancy and maternal health services that better support mothers and babies in Hennepin County.

The following charts and graphs describe births to foreign-born mothers in Hennepin County in 2014, as well as trends from 2005-2014.

## Foreign-born mothers in 2014

In 2014, 4,886 births, or 29 percent, of all births in Hennepin County were to foreign-born mothers.

	Number of births to foreign-born mothers	Percentage of births to foreign-born mothers
<b>Hennepin County births to mothers who were born in places outside of the US or US Territories</b>	4,886	29%

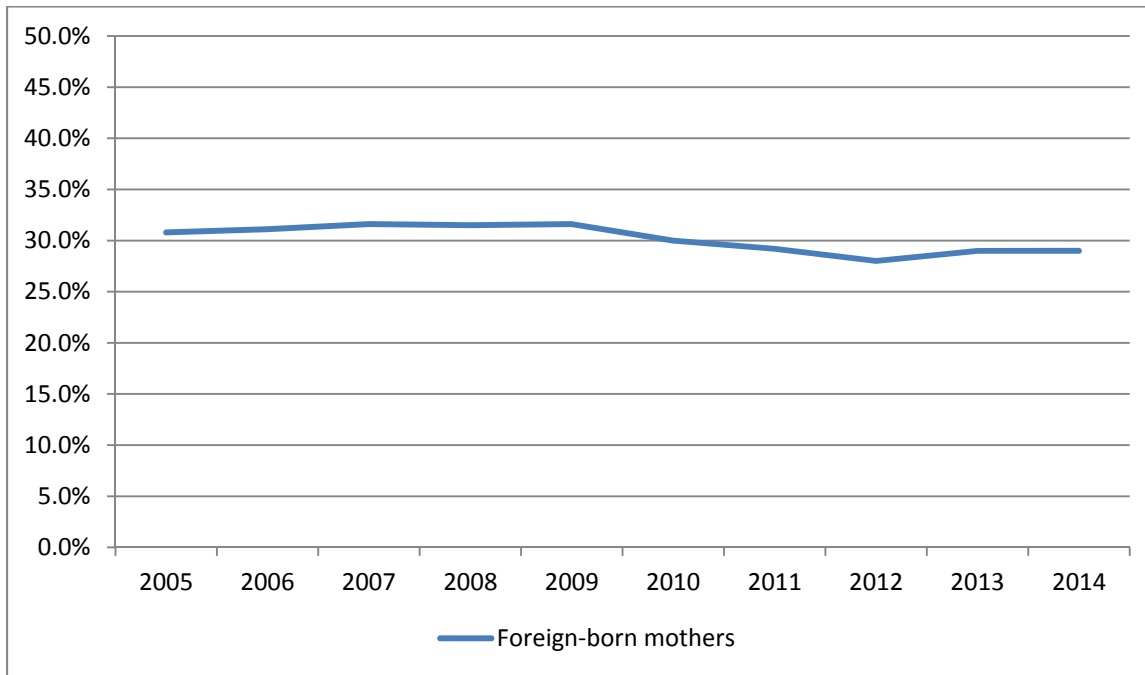


**Hennepin County**  
Public Health  
612-348-6150

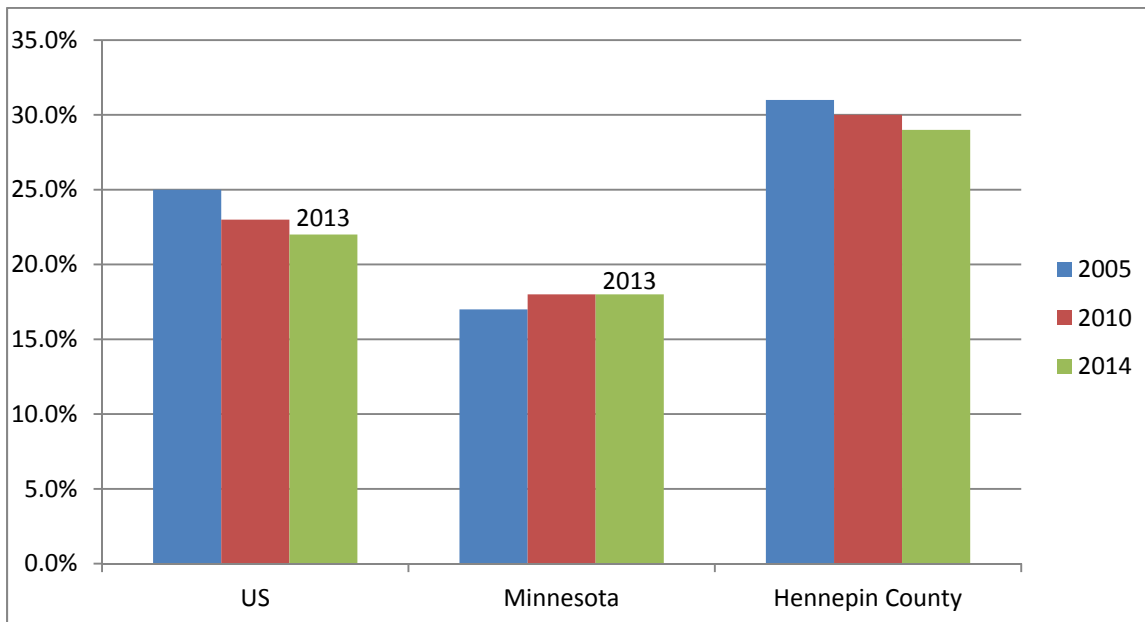
## Indicator: Foreign-born mothers

Births to mothers who were born outside of the United States or US territories

**Figure 1. Births to foreign-born mothers in Hennepin County: 2005 - 2014**



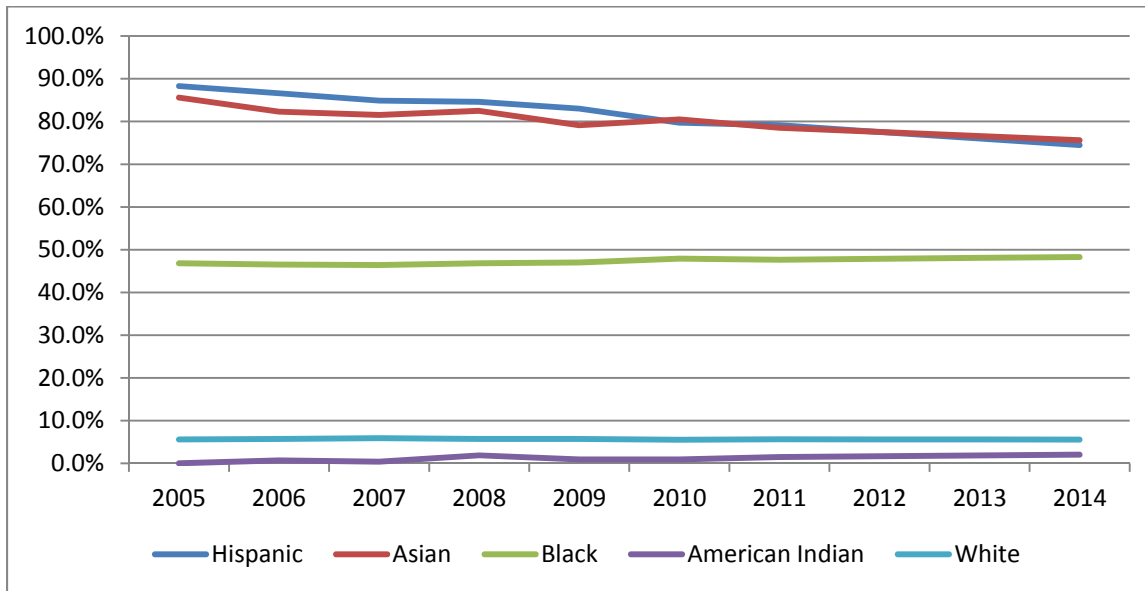
**Figure 2. Births to foreign-born mothers: US, MN, and Hennepin County**



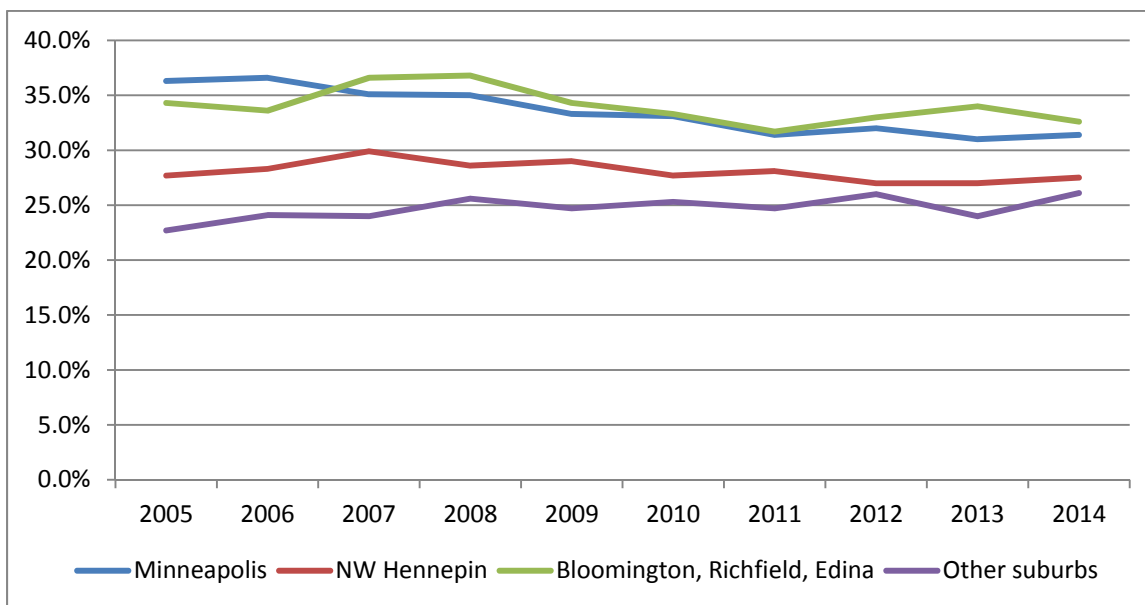
## Indicator: Foreign-born mothers

Births to mothers who were born outside of the United States or US territories

**Figure 3. Births to foreign-born mothers by race/ethnicity: 2005-2014**



**Figure 4. Births to foreign-born mothers by geography: 2005-2014**



## Indicator: Foreign-born mothers

Births to mothers who were born outside of the United States or US territories

### Technical notes

Population		Number of births to foreign-born mothers	Percentage of births to foreign-born mothers
<b>Hennepin County births to mothers who were born in places outside of the US or US Territories</b>		4,886	29.3%
<b>Age</b>	Under age 20	103	18.1%
	Age 20 and over	4,783	29.7%
<b>Race/ethnicity<sup>a</sup></b> <i>Races reported a non-Hispanic</i>	Asian/Pacific Islander	1,358	75.9%
	Black/African American	1,921	52.4%
	American Indian	7	3.7%
	White	496	5.3%
	Hispanic/Latino	1,050	71.8%
<b>Location of residence</b>	Minneapolis	1,191	31.4%
	Suburban Hennepin (includes St. Anthony)	2,967	28.1%
	NW Hennepin County	1,519	27.5%
	Bloomington, Edina, Richfield	664	32.6%
	Other Suburbs	784	26.1%

<sup>a</sup> 145 mothers were of "other" or "unknown" race/ethnicity.

**Definition of indicator:** The numbers and percentages presented in the tables and charts are based on births to mothers who were born outside of the US or US Territories. The term "foreign-born" is used to identify these mothers; it does not indicate or provide any information on the mother's current citizenship or residency status.

**Data source:** The number of births to foreign-born mothers is based on data provided by the Minnesota Department of Health (MDH) from the annual birth certificate files. These data were geocoded by Hennepin County HSPHD to identify births to mothers residing in Hennepin County at the time the birth occurred; these will include births that occurred in other hospitals or locations outside of Hennepin County, where the mothers' address indicated that she was a resident of Hennepin County. The data reported here are from 2014, unless identified otherwise as trends or averages.

## Indicator: Foreign-born mothers

Births to mothers who were born outside of the United States or US territories

**Special notes on reporting by race/ethnicity:** The information on race and ethnicity is based on self-reported data provided by the mothers about themselves; the race/ethnicity of the child may be different from that of their mother. The mothers who identify their ethnicity as Hispanic or Latino may belong to any racial group. The rates reported for Black or African American mothers combines members from both the US-born and African immigrant communities; rates would be expected to be notably different for these two sub-groups. The number of births and the overall rate reported for Hennepin County includes a small number of births to mothers whose race/ethnicity was not identified.

Population estimates by race/ethnicity were revised in 2011 to estimates published by the National Center for Health Statistics Bridged Race population estimates. Prior reports used 1-year estimates from the American Community Survey. The NCHS estimates are more closely aligned with population projections published by the Minnesota Department of Health and used for national vital statistics reporting. Due to this change in population estimates, notable differences in rates of previously published teen pregnancy will be evident in reports from 2011 forward. In addition, multiple race selection became possible in the 2011 birth certificate, which may affect their comparability to data from prior years. For further clarification in interpreting these changes, please contact Dave Johnson at [David.Johnson2@hennepin.us](mailto:David.Johnson2@hennepin.us).